



Products and information

- Formwork Treatments and Concreting Products
- Concrete Repairs
- Protective Coatings
- Grouts and Anchoring
- Joint Fillers and Sealants
- Waterproofing and Damp Proofing
- Flooring
- Urban Landscaping
- Accessories and Consumables
- Passive Fire Protection



Kestral
Construction Products Ltd



Welcome to the Kestral Products Brochure

Established in 1999 and with over 70 years experience in the construction industry and now part of the Multi-national group Miers Construction Products, Kestral are distributors of one of the largest building product ranges in the UK. This enables us to offer a wide range of well over 1000 products from all the major manufacturers at competitive rates, providing you with the reliability and quality you need to have confidence in using these products. Accompanied with our own transport for next day deliveries, makes Kestral one of the leading distributors in the UK.

With our areas of technical expertise we can deal with specifiers, buyers and contract applicators to helping deliver your projects on time, on budget and on specification.

**ADSHEAD
RATCLIFFE**

Adomast

ARDEX
HIGH PERFORMANCE
TILING AND FLOORING PRODUCTS

BSF

BASF
The Chemical Company

Bostik

Ceresit

DCP

Denso

DOW CORNING

DRYZONE
Engineered Treatment for Building Surfaces

EASIPOINT

VISQUEEN
BUILDING PRODUCTS



Flexcrete

fischer
innovative solutions

FOSROC

Geocel
Setting the Standard

GRACE

Henkel

INSTARMAC

OLDROYD
The chemical world are united

PAREX GROUP
Innovative engineering solutions

RIW

Ronacrete

SAFEGUARD
MAKING BUILDINGS LAST

SCP
Construction Products
LTD

Sika

SOUDAL

TECROC
PRODUCTS

TREMCO
illbruck

Vandex

weber

Contents

Formwork Treatments and Concreting Products	2 - 5
Concrete Repairs	6 - 13
Protective Coatings	14 - 16
Grouts and Anchoring	17 - 19
Joint Fillers and Sealants	20 - 24
Waterproofing and Damp Proofing	25 - 31
Flooring	32 - 38
Urban Landscaping	39 - 41
Accessories and Consumables	42 - 43
Passive Fire Protection	44 - 46
Index	47 - 48

Formwork Treatments and Concreting Products

Kestral Construction Products offer a wide and comprehensive range of formwork and treatment chemicals for the civil engineering and precast sectors of the concrete construction market.

Our range includes Concrete Release Agents, Mould Oils, Curing Agents, Concrete Retarder and Repair Cement.



■ Flexcrete TIEFILL

For the filling of tie-holes formed by formwork bolts in new construction, particularly where a rapid setting, durable, waterproof mortar is required. Can also be used for sealing grout holes and voids around fixings in pre-cast elements.

TIEFILL is a single component, polymer modified, fibre reinforced, Portland cement based repair compound, which exhibits unique hydraulic properties to produce a rapid curing mortar with enhanced polymer properties. The product is supplied as a single component system requiring only the addition of clean water to give a rapid setting, yet durable high strength mortar. It is ideally suited for the filling of voids, particularly in new construction, which need to be rapidly put into service - such as tie-holes, grout holes and voids around fixings.

- Incorporates the latest proven cement chemistry, polymer and fibre technology
- High bond strength exceeds tensile strength of concrete thus ensuring monolithic performance
- Sets in 30 minutes at 20°C
- Waterproof seal which withstands 10 bar water pressure after only 72 hours curing
- Excellent protection from acid gases, moisture ingress and chloride
- Improved tensile and impact strength. Excellent low sag properties
- Non-toxic when cured and is WRAS Approved for use in contact with potable water
- Part bags can be mixed

Packed in 8kg pack.

■ Kestral Frostmat

Kestral Frostmat is an ideal concrete curing blanket which will help reduce lost working time on-site, or worse still, the need to replace the concrete that has failed to set at the required minimum strength. These potential problems can cause time and money for the construction industry.

The lightweight material which is easily handled and manoeuvred on-site can also be fabricated on-site as required. It is resilient and tough enough to be re-used many times. Kestral Frostmat is recyclable and therefore a good choice when considering the environment effect of any materials used on-site.

- High performance foam material that is thermo-formable
- Impervious to most chemicals
- Performs consistently over a wide range of temperatures
- Lightweight material which is easily handled
- Resilient and tough
- Can be re-used many times
- recyclable

■ Fosroc® Concure WB

Concure WB is a water based concrete curing compound based on a low viscosity wax emulsion. It is supplied as a white emulsion which forms a clear film on drying.

When first applied to a fresh cementitious surface the emulsion breaks to form a continuous, non-penetrating white coating. This dries to form a continuous clear film which provides a barrier to moisture loss, ensuring more efficient cement hydration, improved durability and reduced shrinkage.

Use as a spray applied membrane to retain moisture in concrete for effective curing. Suitable for all general concreting applications and of particular benefit for large area concrete surfaces, such as airport runways, roads and bridgeworks.

- Improved curing of concrete
- Control of moisture loss improves surface quality, reducing permeability, producing a hard wearing, dust-free surface minimising potential for cracking and shrinkage
- Spray application reduces labour costs and eliminates the need for alternative curing systems

Packed in 20 litre and 200 litre drums. Coverage between 3.5 and 5.0m²/litre (0.200 to 0.285 litres/m²)



call Kestral on 01744 830001

F 01744 830002

e sales@kestral.net

w www.kestral.net

Formwork Treatments and Concreting Products

■ Flexcrete Curing Membrane WB

Curing Membrane WB is a specially formulated, water based Curing compound utilising advanced acrylic copolymers, which is designed for use with the Flexcrete Repair & Protection System. It is non-degrading, enabling it to be used externally as a sealer or readily overcoated with specialist Membranes from the Flexcrete range.

Flexcrete Curing Membrane WB is a non-degrading formulated acrylic resin sealer, which forms an elastic, durable matrix within the surface of cementitious substrates. When used with Flexcrete Repair Mortars and Coatings, it conforms to the requirements for water retention given in ASTM C309. The product is water based and has BBA Certification making it ideal for use in confined areas. When cured, it shows excellent resistance to blushing and weathering and can also be used as a sealer coat for concrete.

- Spray as supplied onto freshly placed repair mortars, fairing coatings, cementitious coatings or concrete
- Convenient alternative to the use of traditional curing aids such as polythene sheeting, damp hessian or sand
- Non-yellowing, stable product not significantly altering the appearance of mortar/concrete
- Retains over 85% of the water in the repair mortar during the first 72 hours
- Safe, water-based product ideal for use in confined areas
- Non-degrading membrane which enhances adhesion when overcoated with Flexcrete specialist Membranes

Coverage: 25 - 35m² per 5 litre pack.

■ Adomast Adocure WW

Water based surface hardener and curing agent.

Adocure WW is an aqueous silicate solution that reacts to deposit an integral layer of high strength crystals in the concrete pore structure.

Helps prevent premature drying out of the concrete surface reducing the risks of surface cracking and dusting.

Improves the durability of the concrete surface.

- Economical and very easy to apply
- Prevents premature drying out of the concrete surface
- Reduced risks of surface cracking and reduced likelihood of surface dusting
- Improves the durability of the concrete surface
- Will enable the concrete to attain improved physical properties
- A tinted grade with a fugitive dye, ADOCURE WWT, is also available to assist in identification during application

Coverage: applied by spray or watering can at a rate of approximately 4-6m² per litre.

■ Adomast Adolease

General purpose mould release oil.

Adolease is designed for everyday site use.

It is a low viscosity, readily applied mineral oil based mould release agent.

Designed to give reliable high performance with all types of formwork.

Adolease forms a physical barrier between the formwork and the concrete giving a quick, clean and easy release with minimum blowhole formation and providing a sharp, uniform and non-stained concrete surface.

- Double action provides physical barrier and chemical release properties
- Facilitates maximum re-usage of all types of formwork
- Provides uniform stain-free concrete surfaces
- Minimises incidence of surface air voids
- Will not impair the bond of any subsequent treatments to concrete
- Concrete deposits on forms virtually eliminated
- Dries rapidly on forms to provide cleaner and safer working surfaces
- Will not be removed by rain showers or light foot traffic
- Inhibits rust formation on steel forms
- Light spray mist coat application provides extremely economic usage
- Suitable for use on all types of formwork in all climatic conditions
- Minimises discoloration of concrete surface

Coverage: spray applied to give a coverage area of between 40 to 50m² per litre (depending upon surface porosity).

■ Adomast Adowax

Ready to use, brushable wax protective coating and mould release agent.

Adowax is a blend of mould release oil and specially selected temperature resistant waxes.

This helps with the initial seal of porous formwork and can be used as a mould release agent where the use of liquid release oil is not practical.

It is easy to apply and helps waterproof and protect formwork in all climatic conditions and when not in use.

- Ready to use, easy to apply
- May be applied to damp formwork surfaces
- Reduces possibility of wood sugar migration and possible staining
- Waterproofs and protects formwork
- Formwork ready for use within an hour
- Protects formwork when not in use

Coverage: 10-12m²/Kg typical for impervious surface. Absorbent and rough surfaces 4-6m²/Kg. Depending on particular material.

Packed in 20Kg resealable containers.



Formwork Treatments and Concreting Products

■ Adomast Safelease

Environmentally friendly mould release emulsion.

Developed using the latest water soluble polymer technology, to produce an environmentally friendly and highly effective mould release agent for general site use.

A low odour, low VOC, non-staining mould release agent designed with minimum blowhole formation and providing a sharp, uniform and non-stained concrete surface. Apply thinly, by spray, brush or swab prior to each concrete pour. Application should be a minimum of 1 hour before pouring, for the excess water to evaporate off and the release film to be properly established.

It is particularly suited for white or fair faced concrete finishes.

- Recommended for high quality finishes
- WRAS approved product
- Low to no odour
- Safe, environmentally friendly product
- NO VOC content
- Low viscosity for easy application
- Readily biodegradable
- After water evaporation, film is resistant to water wash off
- Forms may be stripped early when other factors permit
- Suitable for use with white, coloured or standard OPC concrete finishes
- Non-staining
- Fully compatible with the subsequent application of silicone or similar surface treatments when used as recommended

Coverage: Between 30 to 40m² per litre depending upon surface porosity and texture. Protect from rain when still wet.

■ Adomast Adostrike

High oil content solvent based mould oil.

Designed for general site and precast use, Adostrike is a higher concentration of mould release chemicals blended together to achieve the highest quality concrete finish.

Adostrike is a premium quality mould oil that offers excellent release characteristics.

It has low sag qualities which allows application long in advance of casting without loss in release performance or quality of finish.

Suitable for use on all types of formwork, even on sealed or unsealed timber in all climatic conditions.

It is highly resistant to removal by rain showers or foot traffic.

- Facilitates easy formwork release
- Provides high quality uniform stain-free concrete surfaces
- Minimises incidence of surface air voids
- High coverage rate provides economic usage
- Forms may be stripped early as other factors permit
- Ideal for achieving release from multi-planed features e.g. trapezoidal ribs, cone shaped column heads etc.
- Suitable for use with white or standard OPC concrete finishes
- Fully compatible with the subsequent application of silicone or similar surface treatments when used as recommended
- Low odour and hazard

Coverage: spray applied to give a coverage area of between 30 to 40m² per litre (depending upon surface porosity).

■ Adomast Safetard Gel

Colour tinted water based transparent gel based surface retarder for application to mould face formwork.

Safetard Gel has been formulated to retard the set of fresh concrete that comes into contact with it. It is ideally suited to the production of exposed aggregate finishes or 'keyed' surfaces for construction joints.

- Easily applied by brush
- WRAS approved product
- Suitable for all formwork types
- Weather resistant
- Single coat application
- Concrete can be applied immediately or later
- It will not stain or discolour the concrete
- Water based with no flammable or toxic constituents
- Fully Biodegradable, No VOC's
- Non-hazardous and fully biodegradable
- Any residue on formwork is easily removed
- Can be used for vertical surfaces

Coverage: 3-5m² per litre. Rate will depend on surface texture and porosity.

■ Adomast Safetard Liquid

Brown coloured water based surface retarder for application to concrete top face.

Safetard Liquid has been formulated to retard but not kill the set of freshly placed top face concrete that it comes into contact with.

Easily applied, Safetard Liquid is non-hazardous, fully biodegradable and will not discolour concrete that it comes into contact with.

- Easily spray applied
- Weather resistant
- Single layer application
- Concrete can be applied immediately or later
- Non-staining
- Water based with no flammable or toxic constituents
- Fully Biodegradable
- Any residue left on the formwork is easily removed
- No VOC's
- WRAS approved product

Coverage: 3-5m² per litre. A heavier coating may be required for very dry concrete mix.



call Kestral on 01744 830001

F 01744 830002 e sales@kestral.net w www.kestral.net

Formwork Treatments and Concreting Products

■ Adomast Adocure Sealer

Concrete Curing & Sealing Compound.

Adocure sealer is a clear, low viscosity acrylic polymer resin solution, targeted primarily for application to surfaces of freshly laid concrete where it has a double function.

Firstly, to form a highly effective concrete curing membrane that conforms to ASTM C309 and secondly to act as an in-depth sealer for the hardened concrete rendering its surface dustproof and extremely hard wearing.

Adocure Sealer is also available for Power Floated floors – Adocure Sealer PF.

- Cures and seals in one operation saving time and labour
- Ideal for use in fast-track construction
- Curing efficiency 75% in accordance with ASTM. C309
- Provides abrasion resistant hard wearing easy-clean surface
- Effective anti-carbonation coating
- Permits bond of most subsequent coatings intended for concrete

Packed in 210 and 25 litre containers.

Coverage: New concrete spray minimum coverage of 6m² per litre immediately after final finishing and when surface water is no longer evident.

Existing concrete apply by fan-jet sprayer as above to surfaces that should be clean, sound and free of laitance oil, paint or any other contaminants.

■ Adomast Adocure Super

90% Efficiency Concrete Curing Compound.

Applied to the surface of freshly laid concrete, Adocure Standard physically 'locks' moisture into freshly cast concrete allowing full hydration of the cement thus allowing the concrete to fully cure. This is achieved by covering the surface of the concrete with a very thin resin film that prevents moisture in the concrete from leaving the surface.

Benefits - reduced surface shrinkage and cracking, more durable hard wearing surface and prevention of dusting.

Adocure Super available in an Aluminised version – Adocure Super AL to aid UV reflectivity, and in a fugitive dye tinted form to assist visual indication during application – Adocure Super T.

- Prevents premature drying out of the concrete surface, thus:
- Reducing the risks of surface cracking and reducing the risk of surface dusting
- Improves the durability of the concrete surface
- Will enable the concrete to attain improved physical properties
- 90% Curing efficiency
- Easy to use, spray application

Coverage: Apply the selected grade by spray at a rate of approximately 4 - 6m² per litre.

■ Adomast Adocure Sealer PF

Concrete Curing & Sealing Compound for Power Floated Flooring.

Adocure sealer PF is a clear, low viscosity acrylic polymer resin solution, targeted primarily for application to surfaces of freshly laid concrete that has been power floated.

It has been designed with dual functionality:

Firstly to form a highly effective concrete curing membrane that conforms to ASTM C309.

Secondly to act as an in-depth sealer for the hardened concrete rendering its surface dustproof and extremely hard wearing.

Apply by fan-jet sprayer to achieve a typical coverage of 12m² per litre immediately after final finishing and when surface water is no longer evident. Avoid over application, Adocure sealer PF should not be allowed to form 'puddles' but to just leave a wet gloss appearance.

- Cures and seals in one operation saving time and labour
- Ideal for use in fast-track construction
- Curing efficiency 75% in accordance with ASTM. C309
- Provides abrasion resistant hard wearing easy-clean surface
- Effective anti-carbonation coating
- Permits bond of most subsequent coatings intended for concrete
- Spray applied immediately after final finishing and when surface water is no longer evident

Packed in 210 and 25 litre containers.

Coverage: 12m² per litre typical.

■ Adomast Safecure Super

Aqueous Based 90% Efficiency Concrete Curing Compound.

Applied to the surface of freshly laid concrete, Safecure Super physically 'locks' moisture into freshly cast concrete allowing full hydration of the cement thus allowing the concrete to fully cure. This is achieved by covering the surface of the concrete with a very thin temporary membrane that prevents moisture in the concrete from leaving the surface.

Benefits - reduced surface shrinkage and cracking, more durable hard wearing surface and prevention of dusting.

Safecure Super is also available in a fugitive dye tinted form to assist visual indication during application – Safecure Super T.

- Reduces surface shrinkage and cracking by controlling moisture loss from surfaces
- Increases water resistance
- Enables cement to hydrate more efficiently
- WRAS Approved
- Prevents dusting
- Non-toxic and non flammable
- Eliminates need for damp hessian, sand or polythene
- NO VOC

Coverage: Spray at a rate of approximately 4 - 6m² per litre.



Concrete Repairs

Modern concrete structures have not proved to be as durable as once thought, bringing a legacy of maintenance to ensure that they remain serviceable and capable of achieving their design life. Even structures such as bridges and tunnels, built to modern standards with high strength concrete, are not immune to deterioration in our increasingly aggressive environment. Kestral can offer advanced systems that provide solutions for today's concrete repair problems.

Structural integrity can be reinstated and future protection against carbonation, chloride attack, water ingress and freeze/thaw damage is assured for optimal life span. Kestral continues to offer an ever widening range of innovative products, including repair mortars suitable for application by hand, pouring, or spray techniques, high performance decorative anti-carbonation coatings and waterproof, anti-corrosion coatings for both steel and concrete.

■ Kespach EM41

Kespach EM41 is a solvent free epoxy mortar having excellent adhesion, strength and chemical resistance.

Kespach EM41 is ideal as a general repair mortar for repairs to spalled or damaged concrete and as a general adhesive.

Packed in a two pack system in 5kg Tubs.

2.75 Litres per 5kg Kit (5.5m² @ 5mm thickness approx.)

■ RonaStreet Kerb Repair

RonaStreet Kerb Repair is a pre-packed polymer modified mortar designed for rapid strength gain and low temperature use. Within one hour of mixing (depending on temperature) the material will have gained sufficient strength to take impact and abrasion from foot and vehicle traffic. Supplied with a primer. It can be used in thicknesses from 6 to 50mm.

- Internal and external use
- Can be laid in low temperatures down to -10°C
- Waterproof and frost proof
- Ultra-rapid strength gain
- Traffic within 1-2 hours

Supplied in 5kg packs.

■ Flexcrete BONDING BRIDGE 842

To enhance the bond between high porosity concrete and the relevant FLEXCRETE REPAIR MORTARS or other cement based materials. It can compensate for some inadequacies in surface preparation and prevents rapid drying of the mortar at the concrete interface on porous backgrounds with high suction. Pre-packaged, requiring mixing using the measuring kit supplied. Brush applied in one coat.

Advanced, polymer modified, cementitious surface impregnant with high penetration into concrete. It further increases the adhesion of FLEXCRETE REPAIR MORTARS and prevents rapid drying at the concrete interface on porous backgrounds with high suction.

Packed in 4kg pack.

■ Fosroc® XR 45

Rapid Setting Cementitious Bedding and Repair Mortar supplied as a ready to use blend of cements, graded aggregates and additives. Add water to form a rapid setting mortar. It can be applied in thicknesses from 10mm to 75mm in one application. XR 45 has been specifically formulated for bedding highways ironwork with rapid return to service and is particularly useful when temperatures are expected to be at, or just above freezing.

- Rapid bedding and levelling of manhole frames
- Rapid fixing of signposts and street furniture
- Rapid deck repairs
- Trafficable within 1 hour
- Part bag mixing
- Manufactured under an approved BS EN ISO 9001 Quality System.

Packed in 25kg bags. Coverage and yield approximately 12.0 litres/25kg bag (1.0m² at 12mm thickness).

■ Fosroc® XR 90

General purpose easy to use fast-setting cementitious bedding and repair mortar. XR 90 is supplied as a pre-mixed blend of cements, silica sands and additives, which only requires mixing with clean water to produce a consistent mortar. It has excellent bond strength without the use of a primer and can be applied in thicknesses of 10mm to 75mm in one application.

XR 90 has been specifically formulated for bedding highway ironwork, with return to service within 120 minutes of placing and is particularly useful where delays to construction need to be avoided.

Also used for emergency and general concrete repairs.

- Less expensive than epoxy and polyester resin mortars
- Shrinkage compensated formulation
- Part bags may be mixed
- Hand or mechanical mixing
- Manufactured under an approved BS EN ISO 9000 Quality System

Packed in 25kg bags. Coverage and yield approximately 12.0 litres/25kg bag (1.0m² at 12mm thickness).



call Kestral on 01744 830001

F 01744 830002 e sales@kestral.net w www.kestral.net

■ Fosroc® Nitoprime Zincrich Plus

Single component zinc primer for use with Renderoc repair system. Nitoprime Zincrich Plus is supplied as a single component grey-coloured liquid based on metallic zinc.

Recommended anti-corrosion primer for exposed steel reinforcement for use with Fosroc concrete repair mortars. It is fully compatible with all Renderoc mortars and fluid micro-concretes.

- 'Active' zinc-rich system combats corrosion by electro-chemical means
- Formulated for use with Renderoc repair products
- No restrictive pot-life
- Economical

Nitoprime Zincrich Plus supplied as 1.9 litre and 800ml cans. Coverage 8m²/litre

■ Fosroc® Nitomortar PE

High strength jointing and multi-purpose repair compounds. Nitomortar PE products are based on a polyester resin system. There are two grades.

Nitomortar PE: The standard material for general purpose use.

Nitomortar PE Concrete: A special grade allowing users to add suitable aggregate, thereby substantially reducing the cost of infilling larger voids.

A winter version of Nitomortar PE Standard is available which is faster setting at low ambient temperatures. Both grades of Nitomortar PE are supplied as two-component products with pre-weighed quantities of liquid resin and powdered hardener, ready for on-site mixing and use. The hardener system enables the mix to be varied from a pourable consistency to a trowellable mortar without significantly affecting the setting times or strengths achieved.

For fast and emergency reinstatement of concrete, bedding, jointing and reprofiling of concrete, masonry and brickwork. Nitomortar PE is ideally suited for the repair and reprofiling of precast concrete units, damaged arrises and treads. It can be used to infill hollows and holes in concrete floors, bedding and fixing kerbstones, manhole sets, frames, brick slips, ceramic tiles, slabs and coping stones. Nitomortar PE Concrete should be used to repair larger voids.

- Fast development of strength minimises disruption - stronger than concrete within 2 hours
- High chemical and oil resistance
- Part bags may be mixed
- Will cure down to 0°C
- No primer required
- Pre-weighed components ensure consistency
- Highly impermeable

Nitomortar PE and Nitomortar PE Winter supplied in 14kg packs. Nitomortar PE Concrete 11kg packs.

Coverage Nitomortar PE: 7.5 litres /14kg pack.

Nitomortar PE winter grade: 7.5 litres /14kg pack.

Nitomortar PE Concrete: 15 to 27.5 litres/11kg pack (dependent on aggregate addition)

■ Fosroc® Nitomortar S

Nitomortar S is a high strength epoxy mortar, based on a high quality solvent-free epoxy resin system. The special silica aggregates provide high strength and excellent abrasion resistance.

Nitomortar S is a three-component material supplied in pre-weighed quantities ready for on-site mixing and use.

For the fast and permanent reinstatement of concrete. The product is designed for horizontal use but can be applied vertically, although generally in thinner sections. It is ideally suited for acid tanks, sea walls, industrial floors and for use as a bedding mortar. Nitomortar S can be used for emergency repairs where fast strength gain is important. When properly compacted, the mortar is highly impermeable.

- Early development of strength minimises disruption
- Highly resistant to a wide range of chemicals
- Highly impermeable to water
- Twice as strong as good quality concrete, suitable for heavily trafficked areas
- can be applied in cold conditions down to 5°C

Nitomortar S supplied as 5kg 'Standard' packs and 16kg 'Industrial' packs.

Coverage 2.5 litres/5kg 'Standard' pack 8.0 litres/16kg 'Industrial' pack.

■ Fosroc® Paveroc

Paveroc is supplied as a ready to use blend of dry powders, which simply requires the addition of clean water to produce a highly consistent repair mortar. A high performance reinstatement mortar for large areas of concrete pavements and floors, conforming to the requirements of BS EN 1504-3 Class R4.

Paveroc is designed for horizontal use. It may be applied up to a maximum thickness of 100mm. Thicker sections can be built up in layers. Material should not be applied at less than 12mm thickness. Individual bay sizes should not exceed 18m². Consult the local Fosroc office for further information.

For the reinstatement of large areas of concrete pavements and floors to avoid the total replacement of bays.

The product is alkaline in nature and will protect embedded steel reinforcement. It may be used internally and externally. Patchroc GP is recommended for emergency patching of small areas of concrete pavements and floors.

- Will generally accept pedestrian traffic at 12 hours
- High strength, abrasion and weather resistance
- One component
- Excellent bond to
- Shrinkage compensated
- Contains no chloride admixtures
- Can be applied in cold conditions down to 5°C

Paveroc supplied in 25 kg bags.

Coverage approximately 11.5 litres/25kg bag (approximately 0.9m² at 12mm thickness)

Concrete Repairs

■ Fosroc® Patchroc GP

Fast setting emergency patching mortar for concrete pavements and floors conforming to the requirements of BS EN 1504-3 Class R4. Patchroc GP is supplied as a ready to use blend of dry powders which requires only the site addition of clean water to produce a highly consistent repair mortar.

It is based on Portland cements, graded aggregates, and chemical additives providing a mortar with good handling characteristics while minimising water demand. The low water requirement ensures good strength gain and long-term durability.

Patchroc GP is designed for horizontal use. It may be applied up to a maximum thickness of 100mm. Thicker sections can be built up in layers. Material should not be applied at less than 12mm thickness. Individual bay sizes should not exceed 4m².

For emergency and permanent reinstatement of localised patches in concrete pavements, airport aprons, access ramps and floors.

The product is alkaline in nature and will protect embedded steel reinforcement. It may be used internally and externally.

- Will generally accept traffic in 2 hours.
- High strength, abrasion and weather resistance
- Shrinkage compensated
- Contains no chloride admixtures
- Can be applied in cold conditions down to 5°C

Patchroc GP supplied in 25kg bags.

Coverage approximately 12 litres/25kg bag (approximately 1.0m² at 12mm thickness)

■ Fosroc® Renderoc FC

Renderoc FC cementitious, polymer modified, fairing coat is designed for vertical and overhead use to infill honeycombing and voids up to 3 mm deep in the surface of concrete which is not trafficked and is subsequently coated.

Renderoc FC is supplied as a ready to use blend of dry powders requiring only the site addition of clean water to produce a highly consistent cementitious fairing mortar. The material has good handling characteristics, while minimising water demand. The product exhibits excellent thermal compatibility with concrete and is fully compatible with other Renderoc mortars and Dekguard coatings.

- Compatibility with non-structural concrete of compressive strength 20 - 35 MPa
- Polymer-modification provides extremely low permeability to water, carbon dioxide and chlorides
- Excellent bond to concrete
- Can be applied quickly and efficiently
- One component, pre-bagged
- Contains no chloride admixtures

Renderoc FC supplied in 25 kg bags. Coverage approximately 15.0 litres/25kg bag (5m² at 3mm thickness).

■ Fosroc® Renderoc GP

Renderoc GP general purpose cementitious repair mortar (R3) has been specifically engineered for vertical repair work. It can be applied in sections up to 30 mm thickness in vertical locations and up to 20 mm thickness in overhead locations in a single application and without the use of formwork.

Thicker sections can be achieved by the use of formwork or can be built up in layers. Deep pockets can sometimes be filled in a single application dependent on the configuration of the pocket and the volume of exposed reinforcing steel.

Renderoc GP can be quickly and efficiently applied by the wet spray technique. Consult Kestral for further information.

The material should not be applied at less than 10 mm thickness. A Fosroc primer should be applied.

- Compatibility with concrete of compressive strength 20 - 35N/mm²
- Frequently obviates the need for formwork
- Extremely low permeability to water, carbon dioxide and chlorides
- Exceptional system of shrinkage compensation provides long-term dimensional stability
- Can be applied quickly and efficiently by wet spraying
- One component, pre-bagged to overcome site-batched variations
- Contains no chloride admixtures

Renderoc FC supplied in 25kg bags.

Coverage approximately 16 litres/25kg bag (approximately 1.6m² at 10mm thickness).

■ Fosroc® Renderoc HB

Renderoc HB high build, polymer modified, cementitious repair mortar (R2), has been specifically engineered for vertical and overhead repair work. It can be applied in sections up to 80mm thickness in vertical locations and up to 50mm thickness in overhead locations in a single application and without the use of formwork. Thicker sections can be achieved by the use of formwork or can be built up in layers. Deep pockets can sometimes be filled in a single application dependent on the configuration of the pocket and the volume of exposed reinforcing steel.

Renderoc HB can be quickly and efficiently applied by the wet spray technique. A Fosroc primer should be applied.

- Compatibility with non-structural concrete of compressive strength 20 - 35 N/mm²
- Lightweight formulation enables extra high-build - fewer cold joints
- Frequently obviates the need for formwork
- Polymer-modification provides extremely low permeability to water, carbon dioxide and chlorides
- Exceptional system of shrinkage compensation provides long-term dimensional stability
- Contains no chloride admixtures

Renderoc HB supplied in 18kg bags.

Coverage approximately 14.5 -15.0 litres/18 kg bag (approximately 1.5m² at 10mm thickness).



call Kestral on 01744 830001

F 01744 830002 e sales@kestral.net w www.kestral.net

■ Fosroc® Renderoc HB30

High performance fibre reinforced lightweight concrete reinstatement mortar conforming to the requirements of BS EN 1504-3 Class R3.

Renderoc HB30 high performance, fibre reinforced, lightweight mortar (R3) has been specifically engineered for vertical and overhead repair work. It can be applied in sections up to 60 mm thickness in vertical locations and up to 40mm thickness in overhead locations in a single application and without the use of formwork. Thicker sections can be achieved by the use of formwork or can be built up in layers. Deep pockets can sometimes be filled in a single application dependent on the configuration of the pocket and the volume of exposed reinforcing steel.

Renderoc HB30 can be quickly and efficiently applied by the wet spray technique. A Fosroc primer should be applied.

- Maximum compatibility with concrete of compressive strength 20 - 35 N/mm²
- Lightweight formulation enables extra high-build - fewer cold joints
- Frequently obviates the need for formwork
- Polymer-modification provides extremely low permeability to water, carbon dioxide and chlorides
- Exceptional system of shrinkage compensation provides long-term dimensional stability
- One component pre-bagged
- Contains no chloride admixtures

Renderoc HB30 supplied in 22kg bags.
Coverage approximately 15.0 litres /22kg bag
(approximately 1.5m² at 10mm thickness).

■ Fosroc® Renderoc ST 05

Renderoc ST 05 is a Protective Cementitious Coating and levelling mortar for applications from feather degs to 5mm conforming to the requirements of BS EN 1504-3 Class R4.

It can be applied in thin layers for filling blow-holes or imperfections in concrete to produce a smooth surface. Renderoc ST 05 also provides a chloride and carbonation barrier and can be left as a fair-face finish or over coated. It can be used as a scrape-coat, brush or trowel applied, placed in thicknesses from 0-5mm.

- Easy to mix and apply
- Vertical and horizontal applications
- Excellent bond to concrete without priming
- Formulated blow hole filler
- Carbonation barrier
- Chloride barrier
- High frost resistance
- High compressive strength

Renderoc ST 05 is supplied in 20kg bags of powder and 5.0 litres of liquid.
Coverage approximately 12 litres per pack depending on mix ratio.

■ Fosroc® Renderoc HB45

High performance fibre reinforced medium weight concrete reinstatement mortar conforming to the requirements of BS EN 1504-3 Class R4.

Renderoc HB45 high performance, fibre reinforced, medium weight mortar (R4) has been specifically engineered for vertical and overhead repair work. It can be applied in sections up to 40mm thickness in vertical locations and up to 30 mm thickness in overhead locations in a single application without formwork.

Thicker sections can be achieved by the use of formwork or can be built up in layers. Deep pockets can sometimes be filled in a single application dependent on the configuration of the pocket and the volume of exposed reinforcing steel.

Renderoc HB45 can be quickly and efficiently applied by the wet spray technique. The material should not be applied at less than 10 mm thickness.

- Maximum compatibility with concrete of compressive strength 35 - 60N/mm²
- High-build applications possible while maintaining higher compressive strengths - fewer cold joints
- Frequently obviates the need for formwork
- Polymer-modification provides extremely low permeability to water, carbon dioxide and chlorides
- Shrinkage compensation provides long-term dimensional stability
- One component pre-bagged
- Contains no chloride admixtures

Renderoc HB45 supplied in 25kg bags.
Coverage approximately 14 litres/25kg bag
(approximately 1.4m² at 10mm thickness)



Concrete Repairs

■ Fosroc® Renderoc LA55

High performance free flowing low alkali micro concrete conforming to the requirements of BS EN 1504-3 Class R4. Renderoc LA55 high performance, shrinkage compensated, micro concrete (R4) is designed for large volume repairs typically in excess of 50mm deep. The product can be applied in sections generally up to 150mm thick although greater thickness may be achievable dependent on the configuration of the repair location and the volume of exposed reinforcing steel. A Fosroc primer should be applied.

- Maximum compatibility with concrete of compressive strength 30 - 60 N/mm²
- Complies with BD 27/86 clause 4 and the Specification for Highway works clause 1704.5.
- Dual expansion system compensates for shrinkage in the plastic and hardened states
- Low alkali content minimises risk of alkali-silica reaction
- Exceptional bond to concrete substrates without independent primer
- Suitable for placement by pumping or pouring techniques into restricted locations
- Self-compacting nature eliminates honeycombing and displaces air without vibration
- High strength and low permeability provide maximum protection against carbon dioxide and chlorides
- One component pre-bagged
- Contains no chloride admixtures

Renderoc LA55 supplied in 25kg bags.
Coverage approximately 12.0 litres/25kg bag.

■ Fosroc® Nitofill LV and Nitofill TH

Low viscosity or thixotropic epoxy resin injection grout.

Nitofill LV: A two pack low viscosity epoxy resin product for the repair of cracked concrete and masonry by the injection process between 0.25mm and 9mm wide in concrete and masonry, where both sides of the crack can be sealed to prevent resin drainage.

Low viscosity: Permits maximum resin penetration.

Nitofill TH: Developed for the injection of cracks 0.5 to 9mm wide in concrete and masonry, and has been specially formulated to minimise the drainage of resin from cracks which are incompletely sealed. A two pack thixotropic epoxy resin product.

Thixotropic: Permits injection of open-ended cracks.

Nitofill LV and Nitofill TH

- Achieves high strength bond to dry or wet concrete
- Material designed for low creep
- No loss of bond or surface contact
- High compressive, tensile and flexural strengths
- Withstands most chemicals, acids and alkalis, also water and frost

Supplied as Nitofill LV 3 litre pack. Nitofill TH 1 litre pack.

■ Fosroc® Renderoc RP252

Two component fibre and polymer modified cementitious mortar for re-profiling and protection conforming to the requirements of BS EN 1504-3 Class R3.

Renderoc RP252 is a cementitious fibre and polymer modified re-profiling and protective mortar designed for vertical or horizontal use. It can be applied as a render from 3 mm to a practical maximum depth of 15 to 20mm on verticals and 10mm on soffits. On horizontal surfaces greater thickness e.g. 25mm can be applied, however other grades of Renderoc may be more appropriate.

Prior to the application of Renderoc RP252 any necessary repairs to the concrete should be undertaken using the Fosroc Systematic Approach.

- Easy to use
- Wide range of application thickness
- Low permeability provides protection against carbon dioxide and water-born chlorides
- Excellent bond to the concrete substrate
- One component pre-bagged
- Shrinkage compensated

Renderoc RP252 supplied in 20kg bags, 3.4 litre bottles.
Yield 12 litres per pack (approximately 2.4m² at 5mm thickness).

Renderoc RP252 Surface Conditioner supplied in 5 and 25 litre drums. Yield 7 to 9m²/litre.

■ Fosroc® Concure WB

Concure WB is a water based concrete curing compound based on a low viscosity wax emulsion. It is supplied as a white emulsion which forms a clear film on drying.

When first applied to a fresh cementitious surface the emulsion breaks to form a continuous, non-penetrating white coating. This dries to form a continuous clear film which provides a barrier to moisture loss, ensuring more efficient cement hydration, improved durability and reduced shrinkage.

Use as a spray applied membrane to retain moisture in concrete for effective curing. Suitable for all general concreting applications and of particular benefit for large area concrete surfaces, such as airport runways, roads and bridgeworks.

- Improved curing of concrete enhances cement hydration and provides a more durable concrete
- Control of moisture loss improves surface quality, reducing permeability, producing a hard wearing, dust-free surface and
- Minimising potential for surface cracking and shrinkage
- Fugitive colour provides visual guide during application
- Water based
- Spray application reduces labour costs and eliminates the need for alternative curing systems

Packed in 200 litre and 20 litre drums. Coverage between 3.5 and 5.0m²/litre (0.200 to 0.285 litres/m²)



call Kestral on 01744 830001

F 01744 830002 e sales@kestral.net w www.kestral.net

■ Fosroc® Renderoc HBS

Renderoc HBS high strength, high build, concrete repair mortar (R4) has been specifically engineered for vertical and overhead repair work. It can be applied in sections up to 40 mm thickness in vertical locations and up to 30 mm thickness in overhead locations in a single application without the use of formwork.

Thicker sections can be achieved by the use of formwork or can be built up in layers. Deep pockets can sometimes be filled in a single application dependent on the configuration of the pocket and the volume of exposed reinforcing steel. Renderoc HBS can be quickly and efficiently applied by the wet spray technique. A Fosroc primer should be applied.

- Compatible with concrete of compressive strength 35 - 60N/mm²
- High-build applications possible while maintaining higher compressive strengths - fewer cold joints
- Frequently obviates the need for formwork
- Polymer-modification provides extremely low permeability to water, carbon dioxide and chlorides
- Shrinkage compensated to provide long-term dimensional stability
- One component pre-bagged
- Contains no chloride admixtures

Renderoc HBS supplied in 25kg bags.

Coverage Approximately 15 litres/25kg bag (approximately 1.5m² at 10mm thickness).

■ Flexcrete FASTFILL

FASTFILL is a rapid setting, Portland cement-based structural mortar for the durable repair of concrete which cannot be taken out of service for long periods, or in areas subjected to heavy wear such as roads, runways, bridges, decks, floors and footpaths. Can be used as supplied or bulked out with sharp sand or aggregate.

FASTFILL is a single component, polymer modified, fibre-reinforced, Portland cement based repair compound, which is physically and chemically compatible with the host concrete. It exhibits unique hydraulic properties to produce a rapid curing mortar with enhanced polymeric properties and reliable strength development which is not significantly affected by low temperature use. Can be used as supplied up to 100mm deep, or can be bulked out with sharp sand or aggregate to a flowing consistency for floor or deck repairs up to maximum depth of 300mm.

Packed in 25kg pack.

Min Application Thickness: 5mm

**Max Application Thickness: 50mm on vertical & soffits
100mm on decks & floors**

■ Flexcrete MONOLEVEL RM

For the rendering and profiling of in-situ and precast concrete in vertical, horizontal and overhead surfaces. Can also be applied by wet spray techniques.

MONOLEVEL RM is a single component, thixotropic, fibre reinforced, polymer modified, cementitious mortar which cures rapidly to produce a high performance, waterproof, fair-faced render with enhanced polymeric properties. The product is supplied as a single component system ready for on-site mixing and use, requiring only the addition of clean water.

Packed in 25kg packs.

■ Flexcrete MONOLEVEL 844SP

MONOLEVEL 844SP is a fully waterproof, engineering quality fairing coat for filling minor blow holes and defects, and for repairing surface cavities and honeycombed concrete. Thin screed applications can be used to level both vertical and horizontal concrete surfaces and to reinstate cover while providing a fair faced anti-carbonation finish.

MONOLEVEL 844SP is a single component, thixotropic, polymer modified, cementitious repair mortar with high adhesive properties, allowing it to be used as a waterproof screed, as well as a filler, for filling minor voids and defects to provide a fair faced finish. It incorporates the most advanced microsilica, polymer and fibre technology, curing to provide high waterproofing properties, excellent protection from acid gases, chlorides and freeze/thaw cycles as well as enhanced chemical resistance. The product is supplied as a single component system requiring only the addition of clean water.

Packed in 25kg packs.

■ Flexcrete MONOLEVEL FC

An engineering quality fairing coat for filling minor blow holes and defects, and for repairing surface imperfections. Thin screed applications can be used to level both vertical and horizontal concrete surfaces to provide a fair faced finish.

MONOLEVEL FC is a single component, thixotropic, polymer modified, cementitious mortar with high adhesive properties, allowing it to be used as a thin screed, as well as a filler for filling minor voids and defects to provide a fair faced finish. It incorporates the most advanced microsilica, fibre and polymer technology, curing to provide enhanced freeze/thaw resistance and protection from the ingress of water, acid gases and chlorides. The product is supplied as a single component system requiring only the addition of clean water.

Packed in 25kg packs.

Concrete Repairs

■ Flexcrete MARINE MORTAR S

For the structural repair and profiling of vertical, horizontal and overhead surfaces in marine and tidal areas which are subject to early immersion.

MARINE MORTAR S is a thixotropic, fibre reinforced, polymer modified, cementitious mortar with excellent cohesion for use in areas subject to early immersion. It cures rapidly to produce a high strength mortar with enhanced polymeric properties for the repair of voids in aggressive marine environments. MARINE MORTAR S is supplied as a two component system in pre-weighed quantities ready for on-site mixing and use, requiring no extra additions of water or aggregate and is suitable for application thicknesses up to 50mm.

Packed in 30kg pack.

■ Flexcrete MONOLITE

MONOLITE is a lightweight, high build, shrinkage compensated, polymer modified mortar for the repair, rendering and profiling of concrete, brick or stone substrates.

MONOLITE is a single component cementitious mortar which incorporates the most advanced cement chemistry, microsilica, fibre and styrene acrylic copolymer technology. This results in a rapid hardening, low density mortar with enhanced polymer properties. The thixotropic nature of the product enables easy high build trowel application for the repair of voids and the rendering and re-profiling of both vertical and horizontal surfaces. The product is supplied as a single component system requiring only the addition of clean water.

Packed in 18kg packs.

■ Flexcrete MONORUB

Fine grade polymer modified mortar for filling blow holes and minor surface defects to produce a fine formed finish. Available in Grey and White versions to enable colour matching with the parent concrete.

MONORUB is a single component, polymer modified cementitious mortar for the filling of blow-holes and small surface defects in precast and in-situ concrete, whilst providing an aesthetic yet durable finish. The incorporation of a polymer enhances adhesion and imparts a high degree of water repellency to the surface of concrete, making it denser and more impermeable. Once cured, if required it can be overcoated with specialist membranes in the Flexcrete range to provide further protection and aesthetic quality.

Packed in 25kg pack.

■ Flexcrete MONOMIX

MONOMIX is a low density, high strength, shrinkage compensated, waterproof mortar for the structural repair, rendering and profiling of vertical, horizontal and overhead surfaces.

MONOMIX is a single component cementitious mortar which incorporates the most advanced cement chemistry, microsilica, fibre and styrene acrylic copolymer technology. This results in a rapid hardening, low density, high strength mortar with enhanced polymer properties. The thixotropic nature of the product enables easy high build trowel application for the structural repair of voids and the rendering and re-profiling of both vertical, horizontal and overhead surfaces. The product is supplied as a single component system ready for on-site mixing and use, requiring only the addition of clean water.

Packed in 25kg pack.

■ Flexcrete MONOMIX HD

A high strength, waterproof, shrinkage compensated, standard density mortar with good abrasion resistance for the structural repair, rendering and profiling of vertical, overhead and horizontal surfaces including trafficked areas.

MONOMIX HD is a single component cementitious mortar which incorporates the most advanced cement chemistry, microsilica, fibre and styrene acrylic copolymer technology. This results in a rapid hardening, normal density, high strength mortar with enhanced polymer properties. The thixotropic nature of the product enables easy high build trowel application for the structural repair of voids and the rendering and re-profiling of both vertical, horizontal and overhead surfaces. The product is supplied as a single component system requiring only the addition of clean water.

Packed in 25kg packs.

■ Flexcrete MONOMIX WS

MONOMIX WS is a low density, high strength, shrinkage compensated mortar, which can be applied by wet process spraying techniques for the structural repair, rendering and profiling of vertical, horizontal and overhead surfaces.

MONOMIX WS is a single component cementitious mortar which incorporates the most advanced cement chemistry, microsilica, fibre and styrene acrylic copolymer technology. This results in a rapid hardening, low density, high strength mortar with enhanced polymer properties. The thixotropic nature of the product enables easy high build spray application for the structural repair of voids and the rendering and re-profiling of both vertical, horizontal and overhead surfaces. The product is supplied as a single component system requiring only the addition of clean water.

Packed in 25kg packs.



call Kestral on 01744 830001

F 01744 830002 e sales@kestral.net w www.kestral.net

■ Flexcrete MONOLEVEL 250F

Fine grade polymer modified mortar for filling blow holes, cracks, surface defects and uneven surfaces in sound existing paint finishes as well as concrete and mosaics prior to application of Flexcrete anti-carbonation coatings.

MONOLEVEL 250F is a single component, polymer modified cementitious mortar for the filling of blow holes, cracks, mapping defects, blemishes and levelling out uneven surfaces in existing paint finishes as well as concrete and mosaic substrates. The incorporation of a polymer promotes adhesion to existing painted surfaces, making it ideal for application to provide a fair faced finish prior to application of subsequent protective coatings and paint finishes. Once cured, the product should be overcoated with specialist membranes in the Flexcrete range to provide further protection and aesthetic quality.

Packed in 25kg pack.

■ Flexcrete CURING MEMBRANE WB

Curing Membrane WB is a specially formulated, water based Curing compound utilising advanced acrylic copolymers, which is designed for use with the Flexcrete Repair & Protection System. It is non-degrading, enabling it to be used externally as a sealer or readily overcoated with specialist Membranes from the Flexcrete range.

Flexcrete Curing Membrane WB is a non-degrading formulated acrylic resin sealer, which forms an elastic, durable matrix within the surface of cementitious substrates. When used with Flexcrete Repair Mortars and Coatings, it conforms to the requirements for water retention given in ASTM C309. The product is water based and has BBA Certification making it ideal for use in confined areas. When cured, it shows excellent resistance to blushing and weathering and can also be used as a sealer coat for concrete.

- Spray as supplied onto freshly placed repair mortars, fairing coatings, cementitious coatings or concrete
- Convenient alternative to the use of traditional curing aids such as polythene sheeting, damp hessian or sand
- Non-yellowing, stable product not significantly altering the appearance of mortar/concrete
- Retains over 85% of the water in the repair mortar during the first 72 hours
- Safe, water-based product ideal for use in confined areas
- Non-degrading membrane which enhances adhesion when overcoated with Flexcrete specialist Membranes

Coverage: 25 - 35m² per 5 litre pack.

■ Flexcrete UNIMATCH

For rapid cosmetic repairs to in-situ and precast concrete. It is especially suitable for repairs which need to be matched to the parent concrete to provide a high aesthetic finish.

UNIMATCH is a single component, cosmetic grade repair mortar, based on the latest polymer cement technology, which is suitable for the repair of damaged, honeycombed or spalled concrete. It is highly waterproof and exhibits good build characteristics. It can be used in vertical, overhead and other difficult areas of repair without the use of primers, special lightweight aggregates or support. Colour and texture match is easily achieved by mixing grades of Grey and White at different ratios using trial mixes. If necessary, coloured aggregates can also be blended in, as well as concrete pigments.

Packed in 25kg pack.

■ Flexcrete STEEL REINFORCEMENT PROTECTOR 841

Corrosion preventative, flexible coating to protect steel reinforcement prior to the application of the relevant FLEXCRETE REPAIR MORTARS.

STEEL REINFORCEMENT PROTECTOR 841 consists of two components, a cementitious powder and a polymer dispersion which react chemically together to passivate, with the aid of corrosion inhibitors, and protect steel reinforcement. STEEL REINFORCEMENT PROTECTOR 841 has excellent adhesion to steel and concrete allowing high bond strengths with FLEXCRETE REPAIR MORTARS. STEEL REINFORCEMENT PROTECTOR 841 forms a highly alkaline coating with a degree of elasticity which not only protects the steel from aggressive acid gases, moisture and chlorides, but passivates the steel surface chemically to prevent further rust formation.

Packed in 5kg pack.



call Kestral on 01744 830001

F 01744 830002 e sales@kestral.net w www.kestral.net



Protective Coatings

Concrete structures such as buildings, bridges and other reinforced concrete structures need protecting against the elements such as rain, carbon dioxide, water/marine environment conditions and chemicals that can potentially lead to deterioration and inevitably affect structures.

Kestral's extensive range of protective coatings will extend the lifespan of the structure and are all manufactured to the highest quality standards.

■ Fosroc® Dekguard S

High performance aliphatic acrylic protective and decorative coating for concrete and masonry conforming to the requirements of BS EN 1504-2.

The Dekguard S system comprises a single component, penetrating primer, Dekguard Primer and a single component pigmented coating, both ready for immediate site use.

Dekguard S coating protects atmospherically exposed reinforced concrete structures and other cementitious substrates and masonry from attack by acid gases, chloride ions, sulphates, oxygen and water.

Dekguard S is suitable for use on all types of structures, especially those in aggressive marine and coastal environments. It is equally suitable for new and existing structures.

Dekguard S is a component of Fosroc's Renderoc system of concrete reinstatement.

- Excellent barrier to carbon dioxide, chloride ions, oxygen and water
- Allows water vapour to escape from the structure
- Highly UV-resistant aliphatic acrylic gives exceptional resistance to the effects of long-term weathering
- Wide range of decorative colours

Supplied as Dekguard S: 10 litre drums. Coverage 6m² per litre per coat.

Dekguard Primer: 25 litre drums. Coverage 2.5m² per litre.

■ Fosroc® Dekguard W

Water-based acrylic copolymer protective and decorative coating for concrete and masonry.

The Dekguard W system comprises a single component, penetrating silane-siloxane primer and a single component pigmented coating, both ready for immediate site use.

A range of reactive primers are available to suit substrate porosity and site conditions and inhibit the passage of water and waterborne contaminants.

Used to protect atmospherically exposed reinforced concrete structures, cementitious substrates and masonry from aggressive elements, weathering and rain. Dekguard W is suitable for use on all types of structures, including those in coastal environments. It is equally suitable for new and existing structures.

- Excellent barrier to carbon dioxide, chloride ions, oxygen and water
- Allows water vapour to escape from the structure
- High resistance to the effects of long-term weathering and durable in all climatic conditions
- Water-based
- Wide range of decorative colours

Supplied as Dekguard W: 10 litre drums. Coverage 2.75m² per litre (total).

Dekguard Primer: 25 litre drums. Coverage 2.5m² per litre.

■ Fosroc® Galvafruid

Galvafruid zinc rich coating is formulated as an easily applied, by brush or roller, cold galvanising protection against corrosion on all ferrous metals. Galvafruid has a mid-grey, matt finish.

It can be used as a self-finish or as a durable rust inhibiting primer beneath selected top coats. It is recommended for the protection of structural steelwork, agricultural and construction plant and machinery, gates, railings, iron pipework and guttering, and the rust prevention of in-situ welding work.

**Packed in 6 x 400ml tins. 4 x 800ml tins. 1.9 litre tin.
Coverage 16m²/litre when used as a primer.
8 m²/litre when used as a self-finish.**



call Kestral on 01744 830001

F 01744 830002 e sales@kestral.net w www.kestral.net

■ Fosroc® Dekguard CP

Dekguard CP is a single component weather resistant impregnation and glaze, based on acrylic copolymer and siloxane. Dekguard CP combines an unique ability to protect against attacks by water, carbon dioxide (CO₂) and other chemicals, with an ability to allow water vapour to escape from the structure.

Dekguard CP is a coating which is equally suitable for new and existing structures. To protect reinforced concrete from chloride ions, oxygen, carbon dioxide (CO₂) and other aggressive chemicals. Dekguard CP is a component of Fosroc's Renderoc system of concrete reinstatement.

Dekguard CP has a wide range of uses, e.g. multi-storey car parks, office buildings, industrial buildings, tunnels and bridges.

- Water based
- Single component, ready for use
- Allows water vapour to escape from the structure
- Excellent barrier against carbon dioxide (CO₂) - reduces carbonation
- Resistant to the effects of, and provides long-term protection against chloride ion ingress, sulphates and water
- Weatherproof and durable in all climatic conditions

Packed in 10 litre drums. Yield 0.10 - 0.15 litre/m² per coat. 6 - 10m²/litre.

■ Flexcrete Monodex Ultra

Monodex Ultra is a technically advanced, minimal VOC, water-based decorative coating which protects against carbonation and water ingress without entrapping moisture. It is fast drying for year round use externally with excellent fire performance characteristics for internal use.

A one component, decorative coating which offers an economic solution for the protection of buildings and other structures with a service life up to 10 years. To inhibit the growth of mould and lichen, it contains an active biocide which is retained in-film. Elastomeric properties permit substrate movement and bridging of hairline cracks. Adhesion is excellent to mineral substrates and other commonly encountered building materials.

- Copolymer formulation with excellent adhesion and resistance to weathering
- Arrests carbonation in reinforced concrete structures through high diffusion resistance to carbon dioxide
- available in a range of colours
- Vapour permeable nature allows damp substrates to breathe and dry out without blistering of the coating
- Durable barrier to rainwater ingress with inherent flexibility to resist substrate hairline cracking
- Inhibits the growth of mould, mildew and lichens
- Environmentally friendly

Curing/Drying Time (approx): 1 hour (ideal conditions)

■ Fosroc® Dekguard Elastic

The Dekguard Elastic system comprises a single component penetrating primer and a single component elastomeric pigmented coating, both ready for immediate site use.

Dekguard Elastic is an elastomeric, water based protective coating based on a special acrylic polymer. It provides excellent elongation and recovery, low dirt pick-up, resistance to aggressive elements, UV light and rain. It is available in a wide range of colours.

To protect atmospherically exposed reinforced concrete structures from attack by acid gases, chloride ions, oxygen and water, especially where there is a danger of subsequent cracks appearing within the substrate. The product is also suitable to protect other cementitious substrates and masonry. Dekguard Elastic is suitable for use on all types of structures, including those in coastal environments. It is equally suitable for new and existing structures. Dekguard Elastic is a component of Fosroc's Renderoc system of concrete reinstatement and is suitable for repair principles 1.3, 2.2, 8.2 as defined in BS EN1504-2.

- Can accommodate substrate cracking up to 6mm and cyclic movement up to 1mm
- True elastomeric coating with excellent elongation and recovery properties which are maintained at sub-zero temperatures
- Excellent barrier to carbon dioxide, chloride ions, oxygen and water
- UV-resistant with high resistance to the effects of long-term weathering
- Water-based
- Wide range of decorative colours

Supplied as Nitoprime DG: 25 litre drums. Coverage 2.5m² per litre.

Dekguard Elastic: 10 litre drums. Coverage 2.5m² per litre.



call Kestral on 01744 830001

F 01744 830002 e sales@kestral.net w www.kestral.net



Protective Coatings

■ Flexcrete Bond Prime

Bond-Prime is a single component, water based, epoxy modified polymeric primer for sealing and stabilising substrates prior to the application of the specialist decorative and protective membranes in the Flexcrete range.

Bond-Prime is the latest technology, rapid curing, water based product consisting of an acrylic copolymer modified with a unique water-emulsified epoxy cross-linking agent. Bond-Prime is inherently hydrophobic and alkali resistant, making it ideal for application to a wide range of new and aged mineral substrates.

Non-hazardous, and application is by brush, roller or airless spray to prime and stabilise surfaces prior to the application of Flexcrete's specialist membranes. It cures to form a clear film with an identifying green tint, both on and within the substrate, to provide an ideal surface for subsequent treatment.

- Dries quickly without the release of hazardous solvents and can be overcoated from 1 hour
- Low VOC, single-component, water-based formulation.
- Contains a pre-reacted epoxy cross-linking agent dispersed in water to minimise health hazards
- Easy and safe to apply

Packed in 5 and 25 litres.

Coverage: Varies depending on substrate. Non-absorbent Substrates 10m²/litre (max). Rough, porous or irregular substrates will reduce coverage.

■ Flexcrete Monodex Smooth

Monodex Smooth is a high performance water based, elastomeric, high build, decorative coating which provides protection against carbonation and water ingress, yet allows damp substrates to breathe. It is ultra-fast drying which enables two coat applications to take place on the same day and facilitates year round usage. Monodex Smooth resists the growth of mould and fungi and is ideal both for new construction and refurbishment projects.

A single component waterproof coating based on an advanced micropolymer resin binder which cross-links to give outstanding durability over a service life up to 15 years. The elastomeric nature facilitates substrate movement and bridging of hairline cracks. It can be reinforced to accommodate higher levels of substrate movement. It protects reinforced concrete structures from carbonation and allows substrate moisture to escape without blistering or weakening of adhesion. It is available in a range of attractive colours, and an active biocide inhibits mould and lichen growth.

- High diffusion resistance to carbon dioxide
- Active encapsulated in-film biocide inhibits the growth of mould, mildew and lichens
- Fast drying
- Low hazard, water based product with no flash point
- Easily reinforced locally over cracks and joints, or overall to effectively seal crazed surfaces
- Brush, roller or airless spray

Packed in 15 litre containers.

Curing/Drying Time (approx): 1 hour (ideal conditions)

■ Flexcrete Monosil

Monosil is a surface impregnant which can be applied to concrete, brick, stone, etc, to impart water and oil repellency. This helps protect the substrate from water and oil ingress and enhances freeze thaw resistance whilst enabling easier removal of oil, grease, paint, graffiti, etc. It is particularly suited to the treatment of car park decks and other trafficked areas where oil repellency is required.

A mixture of silane, siloxane and synthetic resins, which in its concentrated form, as supplied, imparts maximum water and oil repellency to mineral substrates such as concrete, brick, stone, etc. It penetrates the surface pores to minimise its effect on the appearance of the substrate and has minimal effect on the water vapour diffusion characteristics. As supplied, the product is ideally suited to the treatment of car-park decks and other trafficked areas, although it may be diluted on-site to provide a more cost-effective solution for the treatment of walls.

- Applied by brush, roller or spray in two coats
- Low hazard, water-based product with no flash point
- Breathable – the pores of the substrate remain open

Packed in 5 litre containers.

Coverage: 6-8m² a litre per coat.



call Kestral on 01744 830001

F 01744 830002 e sales@kestral.net w www.kestral.net

Grouts and Anchoring

The key requirement for a grout is to fill a void and keep it filled indefinitely. A hardened grout should be in permanent contact with the underside of machine or baseplate, etc, to ensure loads are evenly transferred to foundations. Simple grouts of sand and cement with no

compression for shrinkage make it difficult to achieve complete and permanent contact therefore it is essential to use pre-bagged multi ingredient products designed for specific applications.

■ Fosroc® Conbextra EP

Conbextra EP are epoxy resin based products designed for free-flow grouting of gap thicknesses from 0.25mm to 120mm.

Conbextra EP10 for grouting gap thicknesses from 0.25mm to 10mm. Comprising of a two component, low viscosity unfilled epoxy resin system which is mixed and poured into the gap.

Conbextra EPR for grouting gap thicknesses from 10mm to 120mm. A three-component system consisting of base resin, liquid hardener and specially graded inert fillers which are mixed and poured into the gap.

Typical applications include: Reciprocating machinery, testing equipment, heavy crane and transporter rails, high speed turbines, centrifuges, drop forges, electroplating and chemical plants and anchoring of steel bars.

- Low creep characteristics under sustained loading
- Resistant to repetitive dynamic loads
- Non-shrink, ensuring complete surface contact and bond
- High compressive, tensile and flexural strengths
- Fast, convenient installation with rapid strength gain
- Withstands a wide range of chemicals

EP10 packed in 3 litre packs, containing liquid base and hardener. 2 x 1.5 litre units.

EPR packed in 8 and 16 litre packs, containing base, hardener and filler.

■ Fosroc® Conbextra PM

Conbextra PM is for structural grouting of gaps in precast units and high strength pointing. A single pack cement based pumping mortar, blended from cements, fine aggregates and admixtures with a maximum grain size less than 1mm. It requires only the addition of clean water to produce an easily pumped mortar.

- High strength
- Fast installation rate
- Pump application
- Pre-blended to overcome site-batching variations
- Easy to use no priming required
- Rapid strength gain
- Shrinkage compensated

Packed in 20kg bags.

■ Fosroc® Conbextra BB92

Conbextra BB92 is a ultra-high performance grout specifically designed for structural grouted connections for wind turbine foundations and oil and gas installations.

- Non-shrink
- High flexural strength and modulus of elasticity without the addition of fibres enhancing the flow characteristics of the grout
- Quick return to service and removal of temporary supports due to high early strength build-up, even at low temperatures
- High fatigue resistance
- Suitable for pumping or pouring over a large range of applications
- No segregation or bleeding to ensure consistent final physical performance and to prevent pump blockages.

Packed in 25kg bags or 1T bulk bags.



Grouts and Anchoring

■ Fosroc® Conbextra TS

Conbextra TS is used for free flow, non-shrink, cementitious grouting for gap thicknesses 75 to 500mm. Supplied as a ready to use dry powder. The addition of a controlled amount of clean water produces a free-flowing grout. In addition the low water requirement ensures high early strength and long-term durability.

Conbextra TS is a blend of Portland cements, graded fillers, selected aggregates and chemical additives. The filler grading produces a highly flowable grout which will not segregate or bleed and reduces the exothermic heat generation and risk of thermal cracking common with gap thicknesses in excess of 100mm.

Recommended applications include: Stanchion baseplates where a large gap is present, joints between pre-cast concrete panels and filling box sections.

- Non-shrink
- High strength
- Chloride free
- Can be pumped or poured
- Suitable for thick sections

Packed in 25kg bags.

■ Fosroc® Conbextra BB

Conbextra BB is formulated specifically for grouting of bridge bearings and parapet post baseplates. The dry powder is a blend of ready to use Portland cements, graded silica sands and additives to which a controlled amount of clean water is added to produce a highly flowable non shrink grout that can be poured or pumped. It can be used in section thicknesses 10 to 100mm.

- Complies fully with the Department of Transport Specification for Highway Works March 1998 Clause 2601
- Non shrink
- High strength
- Excellent flow, particularly at low temperature
- Low permeability ensures durability

Packed in 25kg bags.

■ Fosroc® Conbextra GP

Conbextra GP is used for free flow, non-shrink, cementitious grouting of gap thicknesses 10 to 75mm. Supplied as a ready to use dry powder. Adding a controlled amount of clean water produces a free-flowing grout. The low water requirement ensures high early strength and long-term durability.

Conbextra GP is a blend of Portland cements, graded fillers and chemical additives. The filler grading produces a highly flowable grout which will not segregate or bleed.

Recommended applications include: Stanchion baseplates, joints between pre-cast concrete panels, grouting applications where pouring access is restricted, anchoring of reinforcing steel bars, installation of tie bars, trowelling consistency can be used for bedding and in lieu of dry packs.

- Non-shrink
- High strength
- Chloride free
- Can be used at flowable or trowelable consistency
- Conbextra GP complies with LU Standard 1-085 'Fire Safety Performance of Materials'.

Packed in 25kg bags.

■ Fosroc® Conbextra UW

Conbextra UW is a free flow or pumped non-shrink, cementitious grout for use underwater or in tidal zones where "wash out" would be a problem with conventional grouts.

Supplied as a ready to use dry powder. The addition of a controlled amount of clean water produces a free-flowing grout. The grout exhibits exceptional resistance to "washing-out" of the cement phase when placed in stationary or moving water.

Conbextra UW is a blend of Portland cements, graded fillers and chemical additives. The aggregate grading minimises segregation and bleeding whilst assisting flow characteristics.

Recommended applications include: Stanchion baseplates, bridge columns, quay pillars, concrete piling and slipways.

- No risk of significant "wash-out" of cement phase when placed under water
- Displaces water effectively
- Gaseous expansion system compensates for shrinkage and settlement in the plastic state
- High early and ultimate strength
- Exceptional resistance to freeze thaw - ensures durability
- Chloride free
- Prepackaged needing only on-site addition of water

Packed in 25kg bags.



call Kestral on 01744 830001

F 01744 830002 e sales@kestral.net w www.kestral.net

Grouts and Anchoring

■ Fosroc® Conbextra HF

High-flow, non-shrink, cementitious grout conforming to the requirements of BS EN 1504-3 Class R4 and BS EN 1504-6: Anchoring of reinforcing steel bar.

Conbextra HF is used for free flow, non-shrink, cementitious grouting of gap thicknesses 10 to 100mm. Supplied as a ready to use dry powder. The addition of a controlled amount of clean water produces a free-flowing grout. In addition the low water requirement ensures high early strength and long-term durability.

Conbextra HF is a blend of Portland cements, graded fillers and chemical additives. The filler grading produces a highly flowable grout which will not segregate or bleed.

Recommended applications include: Large stanchion baseplates, joints between pre-cast concrete panels, pumped grouting applications, grouting applications where pouring access is restricted, anchoring of reinforcing steel bars and installation of tie bars.

- Non-shrink
- Highly flowable
- High early age strength
- Chloride free
- Suitable for pumping
- Conbextra HF complies with LU Standard 1-085 'Fire Safety Performance of Materials'.

Packed in 25kg bags.

■ KCP Construction Grout

D.o.T. Highways Spec:- 2601 Compliant. KCP Construction Grout is a non shrink, high strength cementitious grout comprising of low alkali high specific surface area Portland cements and other cementitious binders combined with high purity aggregates and a system of compatible admixtures to achieve high in service performance.

This grout has high flow characteristics to achieve penetration and levelling with no bleed and zero shrinkage when placed at 0.22 water solid ratio.

KCP Construction Grout has been specifically designed for anchor or base plate grouting, under machinery and stanchion plates, grouting rails and bridge bearings, fixing bolts, parapet rails etc. It can also be used in its plastic state as a bedding mortar.

- Equivalent Sodium Oxide is less than 3.0kg/m³
- High ultimate strength
- Shrinkage compensated
- Can be used for grouting sections up to 100mm thick
- Chloride free
- High fluidity – can be pumped or poured

Packed in 25kg bags.

Also available in Intermediate Bulk Containers or in Bulk Powder Tankers.

■ Fosroc® Cebex 100

Cebex 100 is supplied as a powder admixture. The material is a combination of a plasticising agent and a gas producing expansion medium.

The plasticising agent allows the use of a reduced water/cement ratio with consequent increased strengths and durability. The expansive medium counteracts the natural settlement and plastic shrinkage of the grout and aids stability and cohesion. Gives high grout fluidity with low water/cement ratio, thus making placement or injection of the grout easy.

Used as admixture for site batched cementitious grouts where a reduced water/cement ratio and positive ex-pansion is required. Applications include bed grouting, duct grouting, non-shrink infilling and jointing.

- Gaseous expansion system compensates for plastic shrinkage and settlement in properly designed cementitious grout.
- Reduced water/cement ratio in the grout mix ensures low permeability and long term durability in service.
- Gives high grout fluidity with low water/cement ratio, thus making placement or injection of the grout easy.
- No metallic iron content to corrode and cause staining or deterioration due to rust expansion in the grout.
- Composition allows high early strength development in grouts, without the use of chlorides.

Supplied in packs containing 24 x 227g units.



Joint Fillers and Sealants

Joints in a structure occur for a number of reasons i.e. day joints, natural barriers in construction (damp courses, transitions from brick to blockwork), around window frames and where gaps are designed to accommodate thermal movement and settlement of the foundations.

To prevent cracks from appearing, joints need proper consideration when designing a building. Any joint that may be penetrated by wind, dirt, water or vapour will need to be sealed with a joint sealant.

■ Kesflex Polyurethane Expansion Joint

Kesflex Polyurethane Expansion Joint is a two part pourable grade polyurethane. Kesflex Polyurethane Expansion Joint is easy to mix, giving good self levelling properties and can be poured directly into horizontal joints.

Used for sealing internal joints subject to heavy industrial use in factory and warehouse floors.

- Good chemical resistance to minerals, acids, alkalis and petroleum based fuels
- Provides a tough resilient cure
- Excellent adhesion, without a primer, to clean dry concrete
- Suitable for use in wide joints
- Choice of colours
- Good abrasion resistance
- Good flexibility giving high movement capability

Packed in 5kg units.

■ Bitumen Impregnated Fibre Board

Bitumen Impregnated Fibre Boards are used as a general purpose expansion joint filler in concrete slab and wall construction, and as a protection board for waterproofing membranes.

The Board consists of compressed wood fibres from Scandinavian timber, impregnated with Bitumen Emulsion.

Available in sizes:

Thickness: 10mm, 12mm, 19mm, 25mm.

Sheet Size: 2.20m x 1.22m. Cut Strips: 100mm, 150mm, 175mm, 200mm other widths to order.



■ Adshead Radcliffe Arbothane 1245

Arbothane 1245 is a one part polyurethane sealant which cures on exposure to moisture vapour to form a tough but flexible rubber. It has good adhesion to concrete, brickwork, metals and many other common construction substrates.

For use in floor joints, expansion joints and structural cladding.

- For joint widths between 6 - 25mm
- Colour grey

Packed in 20 x 600ml foils per box for use with foil pack gun.

■ DOW CORNING® 895

DOW CORNING 895 is a one-part, neutral curing silicone sealant designed specifically for the structural bonding of glass, metal, and other building components.

- Meets European standards for structural glazing application, as developed by EOTA
- Excellent adhesion to a wide range of substrates
- Odourless and non-corrosive cure system
- Resistant to ozone and temperature extremes

Available in 310ml cartridges.



■ Joint Backer Rod

Joint Backer Rod is a non-absorbent, compressible grey closed cell polyethylene (P.E) foam backup material. Recommended for reducing the depth of joints in construction/glazing use. Can be used for creating a backstop to allow proper sealant tooling.

- Quick and easy to apply
- Reduces sealant usage
- Improves sealant performance by obtaining easily the correct joint dimensions
- Flexible; won't bubble or blister

Size	Box Quantity
6mm x 2500m	1
10mm x 1150m	1
13mm x 750m	1
15mm x 550m	1
20mm x 350m	1
25mm x 200m	1
30mm x 160m	1
40mm x 270m	1
50mm x 180m	1



call Kestral on 01744 830001

F 01744 830002 e sales@kestral.net w www.kestral.net

Joint Fillers and Sealants

■ Miothene

Miothene is used to form expansion joints in concrete slabs and brickwork. Miothene remains in the joint and greatly reduces compressive stresses.

Miothene makes an ideal bond breaker and back-up sealing strip between concrete panels.

Closed cell polyethylene foam is used as a joint filler, joint former, non-load transfer filler, grout check, Stop-end, insulant and many other applications.

Miothene is compressible yet semi-rigid, strong and non-absorbent. It is produced in various densities, the most widely used is Standard Miothene. It is light, clean and easy to use. It can be stuck to all normal building surfaces. Miothene is resistant to most chemicals and oils, is non-staining and has high weathering and ozone resistance. An added advantage of Miothene is that it can be supplied in long-length rolls up to 1.6 metres wide.

■ Adshead Radcliffe Arbokol 1025 SP

Arbokol 1025 SP is a unique two part Epoxy sealant which cures to form a hard wearing seal, designed to accommodate small amounts of movement in extension but considerable movement in compression.

Recommended for use in a variety of internal stress relief joint systems where continual water resistance and a high degree of chemical resistance (especially to common cleaning substances) are required.

For use in Swimming pools, compression joints, tile to tile joints (no primer required), long term water immersed joints, shower rooms.

- For joint widths between 6 - 20mm
- Colours off white and grey

Packed in 1.2 Litre Set, with separate tins for base and curing agent follower plate

■ Geocel HM Silicone

Geocel HM Silicone sealant is a one-part sealant, which has been specifically developed for use by the sealant contractor. It has good adhesion to a range of non-porous substrates including glass, aluminium and painted wood. Geocel HM Silicone Sealant is suitable for use in sanitary applications.

- Specially developed for use by sealant contractors
- For joint widths between 6 - 12mm
- High modulus, high elasticity
- Fungus and mildew resistant
- Conforms to ISO11600
- Resistant to ozone, ultra-violet radiation and temperature extremes

Available in 310ml cartridges.

■ Adshead Radcliffe Arbokol Secure

Arbokol Secure is a unique two part Epoxy sealant which cures to form a hard wearing seal, designed to accommodate small amounts of movement in extension but considerable movement in compression.

Recommended for use in a variety of internal stress relief joint systems where a tough, non pick seal is required.

For use in prisons, custody suites, mental hospitals and other secure environments. Perimeter sealing of cell doors and windows, sealing of fixings and sanitary ware, anti pick/anti vandalism joints, heavy duty floor joints, tile to tile joints (no primer required), shower rooms.

- For joint widths between 6 - 20mm
- Colours off white and grey

Packed in 1.2 Litre Set, with separate tins for base and curing agent follower plate

■ Geocel LM Silicone

Geocel LM Silicone Sealant is a one-part sealant, which has been specifically developed for use by the sealant contractor. It has good adhesion to a range of non-porous substrates including glass, aluminium and painted wood.

- For joint widths between 6 - 12mm
- Low modulus, high elasticity
- Available in a range of colours

Available in 380ml cartridges.



Joint Fillers and Sealants

■ Geocel 201

Geocel 201 is a one part, ready to use, flexible sealant for expansion joints in building and construction. It has excellent adhesive and weathering properties and cures to a tough, flexible sealant. It is ideal for sealing against pre-cast facing and cladding panels, wall tiles, granite, metal or timber window frames, masonry and certain glazing systems.

- Excellent adhesion to both porous and non-porous surfaces
- Large colour range available
- Joint movement capability of $\pm 20\%$
- Easy to apply, one component sealant
- No maintenance required
- Unaffected by extremes in climatic conditions
- Non-slump
- Over paintable

Available in 380ml cartridges.

Colours white, grey, teal, black, buff and brick red.

■ Geocel 945

Geocel 945 is a one part high modulus MS Polymer based sealant and adhesive for building and civil engineering structures.

Geocel 945 has a movement accommodation factor (MAF) of 50%. The sealant can be applied into joints 6mm to 40mm wide and a depth of 6mm to 25mm. Generally the joint slot should be designed to ensure that the sealant width to depth ratio is between 11/2 :1 and 2:1.

Where joints are subjected to traffic a width to depth ratio of 1:1 should be adopted. For joints with high casting and setting out tolerances, the joint depth should be a minimum of 10mm with accurately formed joints in metal, a minimum 6mm.

- Fast cure
- Abrasion resistant
- Resistant to aerobic and anaerobic bacteriological attack
- Excellent application characteristics
- High strength adhesive bond
- Permanently flexible

For use in sealing movement joints in:

- Building sub structures
- Culvert and bridge assemblies
- Concrete road soak away channels
- Concrete floor slabs (Saw cuts)
- Internal stone flooring
- Expansion joints in water retaining structures

It can also be used for industrial applications including:

- Floor plates
- Skylights
- Anti-vibration locking of nuts and bolts
- Air conditioners
- Gaskets and profiles
- Lap seams
- Vehicle cabs

Available in 290ml cartridges and 600ml sausages.

Colours grey, white, black, concrete grey and buff.

■ Geocel 925 NS

Geocel 925 NS is a one part low modulus MS Polymer based joint sealant designed for use on prestige buildings and those highly exposed to extreme weather conditions, aggressive atmospheres and UV light. This sealant has been specifically formulated as a non staining sealant and for application to difficult substrates associated with modern facade construction.

Non-hazardous, containing no free isocyanates, volatile organic solvents, acids or halogens. Environmentally friendly, with excellent resistance to UV light and atmospheric degradation.

- Non staining including Hydrophobic staining
- Good primerless adhesion on many common construction substrates
- Damp surface tolerant
- Low dirt pick up
- Excellent adhesion to a wide variety of substrates
- High movement accommodation
- High UV and aggressive atmosphere resistance
- Comprehensive colour range
- Environmentally friendly
- Excellent low temperature gunnability
- Improved gun and tooling characteristics

For sealing joints to building facades where:

- High movement is anticipated
- Non staining is a requirement
- Prestige finish is important
- Extreme weather conditions are expected

Available in 380ml cartridges and 600ml sausages.

Colours black, grey, white, buff, stone, travatine. Special colours available on request.

■ Fosroc® Colpor 200PF

For the sealing and maintenance of joints in concrete roads, concrete runways and hard standings. Colpor 200PF is particularly suitable for sealing areas where fuel and oil spillage might occur such as aircraft hard standing areas, oil terminals, garage forecourts, parking and cargo bays.

Colpor 200PF is a two component cold applied pouring grade sealant for pavement joints. It is flow applied into the joint either directly from the can or using a Fosroc G Gun.

Colpor 200PF retains its movement accommodation of 25% on butt joints throughout the extremes of temperature, it does not harden in cold weather nor become excessively soft, or pick up in hot conditions.

- High durability and long service life
- High movement accommodation
- Cold applied - no heating equipment required
- Fuel, oil and hydraulic fluid resistance
- Jet blast resistant

Available in cartons containing 2 x 5 litre units, comprising a tin of base and of curing agent.



call Kestral on 01744 830001

F 01744 830002 e sales@kestral.net w www.kestral.net

Joint Fillers and Sealants

■ Fosroc® Thioflex 600

Thioflex 600 is a multi-component, gun and pouring grade, polysulfide sealant for sealing movement joints in building and civil engineering structures, including superstructures, floors, basements and subways.

The gun grade is ideal for general application. Supplied in the correct proportions. The pouring grade for joints in horizontal surfaces is supplied in 5 litre packs.

- Can be applied to joints between 5 and 50mm wide
- Meets key international standards
- Forms a tough, elastic, rubber-like seal
- Accommodates continuous and pronounced cyclic movement
- Excellent adhesion to most common substrates
- High resistance to ageing reduces physical damage due to climatic extremes

■ Fosroc® Hydrocell XL

Hydrocell XL is a cross linked, non-absorbent, semi-rigid, cellular polyethylene joint filler used for forming expansion joints in concrete, brickwork and blockwork. The product provides excellent support to sealants subject to hydrostatic pressure and is particularly recommended for water retaining or water excluding structures.

- Cross linked to resist lateral and hydrostatic pressure
- High density support of sealant to prevent adhesion failure

Available in sheet sizes:

10mm x 1000mm x 2000mm
15mm x 1000mm x 2000mm
20mm x 1000mm x 2000mm
25mm x 1000mm x 2000mm

- Non-absorbent
- High compression recovery
- Non-extruding
- Low load transfer to joint edges
- Chemically resistant

■ Fosroc® Nitoseal MS60

Nitoseal MS60 one part, general purpose building sealant suitable for sealing joints in concrete, brickwork, blockwork, perimeter sealing around doors and windows, and non-trafficked floor joints. Nitoseal MS60 is a one part, low modulus sealant based on hybrid silyl modified polyether ("MS") technology.

- Applied to joints between 5 and 35mm wide
- Adhesion to most common building materials
- Single component with fast rate of cure
- Can be applied to damp substrates
- Primerless
- UV resistant and colour stable
- Performs as an acoustic sealant
- Available in a range of colours
- Environmentally friendly

Available in 10 x 600ml sachets for Fosroc G gun, and in 380ml cartridges.

■ Fosroc® Nitoseal MS600

Nitoseal MS600 is a one part, civil engineering sealant for immersed conditions (Fosroc Primer MS2 is required before using the sealant). Suitable for sealing movement joints in buildings and civil engineering structures including joints.

Nitoseal MS600 is a modulus sealant based on hybrid silyl modified polyether technology. It has a fast rate of cure and forms a tough, highly durable and water resistant elastomer. Conforms to the Water Supply (water quality) Regulations 2000 and 2001 Regulations 31(4b) for products having a small surface area in contact with water for public supply.

- Meets key international standards
- Resistant to aerobic and anaerobic bacteriological attack
- Resistance to dilute acids and alkalis
- Accommodates continuous and pronounced cyclic movement
- High resistance to ageing, reduces physical damage due to climatic extremes
- Easy to apply at low temperature
- Can be applied to damp substrates
- Isocyanate free technology

Nitoseal MS600 supplied in 10 x 600ml sachets.
Fosroc Primer MS2 supplied in 0.75 litre packs.

■ Fosroc® Expandafoam

Closed-cell polyethylene joint filler, back-up strips and cord.

Expandafoam is a flexible, readily compressible, closed-cell polyethylene joint filler supplied in sheet form and as rectangular strips or circular section cords.

Expandafoam is a closed-cell polyethylene joint filler for use as an expansion joint filler in brick and blockwork, isolation joints and hinge joints where a readily compressible low load transfer joint filler is required.

Strip and cord sections are also available. These are used as back-up strips for elastomeric sealants. For back-up / bond breaker strip to support sealants, bridge decks, abutments, pier hinge joints, brick and blockwork in building superstructures.

- Readily compressible
- Low load transfer
- Excellent recovery after compression
- Non-absorbent
- Rot-proof
- CFC-free

Sheet Size	Sheet Thickness	Strip Size	Strip Dimensions
1.0 x 2m	10mm	15m	10 x 100mm
	12mm		10 x 150mm
	15mm		12 x 100mm
	20mm		20 x 150mm
	25mm		20 x 200mm

All 10 and 12mm strips have a 10mm deep tear-out section and all 20 strips have a 20mm tear-out section to ensure uniform depth of sealant cover.



Joint Fillers and Sealants

■ Fosroc® Flamex Fire Protection

Under fire conditions Flamex One and Flamex Two intumesce, forming a foam-like structure which insulates and provides a barrier to hot gas and flame.

Flamex One emulsion based sealant sets quickly and gives excellent adhesion to most building materials. It has a 10% movement accommodation factor for low movement joint sealing and gap filling applications such as fire door frames. Flamex One is also suitable for sealing around fire protection boards. It can be used in joints from 5 to 20 mm. The minimum depth of seal should be 15 mm. Acts as an acoustic sealant.

Flamex Two high performance sealant forms a tough, flexible rubber-like seal with a movement accommodation factor of 25% for high movement situations. Flamex Two is suitable for expansion joints in building superstructures and may be used in both internal and external joints. Flamex Two can be used in joints from 5mm upto 50 mm wide. The width of sealant should ideally be twice the depth, with a minimum depth of 12mm. In trafficked joints, sealant depth should be a minimum of 20 mm. The use of a surface primer is always required.

- Extensively fire tested in accordance with BS 476 Pt:20: 1987.
- Fire tested in overhead joints as well as in wall joints
- Over 4 and 5 hours insulation and longer integrity rating, depending on joint design
- Suitable for fire stopping of joints as defined by Approved Document B of the Building Regulations
- Prevents the passage of smoke through joints under fire conditions
- Effective as normal building sealants and allows structural movement
- Flamex Two is resistant to a range of chemicals

Flamex One is supplied in 380ml cartridges packed in cartons of 20.

Flamex Two is supplied in 2.5 litre tins in cartons of 4.

■ Fosroc® Nitoseal MS300

A one part, high modulus, damp tolerant, floor sealant based on hybrid silyl modified polyether technology. A rapid rate of cure forms a tough elastomer capable of supporting heavy wheel loads.

Applied between 6mm and 20mm wide, for trafficked joints (up to 40mm non-trafficked). It is recommended to form a sealing slot with a square cross-section, subject to a minimum 10mm depth.

To ensure the sealant operates within its stated movement accommodation capacity the sealing slot widths should be designed in accordance with the recommendations of BS6093.

- Suitable for saw cut and perimeter joints
- Abrasion resistant
- Withstands vehicular traffic
- Easy to apply at low temps
- Can be applied to damp substrates
- Primer-less, gun applied
- Hard, but flexible sealant; resists picking and vandalism

Nitoseal MS300 - 600 ml sachets. 10 no. sachets per box.

■ Fosroc® Nitoseal PU800

Nitoseal PU800 is a two-component gun grade elastomeric sealant for limited movement joints. After mixing, the resultant compound will cure to provide an exceptionally robust seal, while retaining a degree of flexibility. Nitoseal PU800 is abrasion resistant and withstands spillage of fuel oils, mineral acids and vegetable oils. Nitoseal PU800 can be used in joints between 5mm and 50mm wide.

For sealing internal joints subject to heavy loading and abrasion, or where chemical resistance is required. Can be used in factories, warehouses and distribution centres. It is, particularly effective where there is forklift truck traffic. Nitoseal PU800 can also be used where joints would be subject to stiletto heels, shopping centres, podiums etc. It is suitable for use in prisons as an anti-pick sealant for sealing internal partitions, cell doors and windows, fittings and furniture.

The joint sealant shall be Fosroc Nitoseal PU800, an epoxy urethane, heavy duty sealant. It shall be applied in accordance with the Fosroc data sheet.

- Cures to a tough seal
- Abrasion resistant
- High modulus
- Resistant to chemical, fuel and oil spillage
- Easily installed to give a flush finish
- Hard, but flexible sealant; resists picking and vandalism

Nitoseal PU800 is supplied in 2 litre tins in cartons of two.

■ Fosroc® Nitoseal MS100

One part, primer-less, non-staining facade sealant. Nitoseal MS100 is a tough, durable elastomeric joint sealant. It is based upon hybrid silyl modified polyether technology. It is suitable for use over a wide range of external and internal building applications and has excellent weather resistance.

Nitoseal MS100 has excellent primer-less adhesion to a wide range of common building substrates and does not stain concrete, marble and other masonry surfaces.

Formulated for stain-free sealing of joints in and around concrete, brick, masonry, pre-cast panels, stone cladding, windows, doors and fibre cement sheeting.

- Can be applied to damp substrates
- Fast neutral cure
- Highly flexible with excellent application characteristics
- Low odour, environmentally friendly
- Low modulus and high movement capabilities.
- Excellent UV and weather resistance
- Performs as an acoustic sealant
- Good adhesion to silicone, polysulphide or polyurethane contaminant

Nitoseal MS100 is supplied in 380ml cartridges.



call Kestral on 01744 830001

F 01744 830002 e sales@kestral.net w www.kestral.net

Waterproofing and Damp Proofing

Waterproofing of structures is necessary to exclude or retain water or other aqueous liquids. This may be achieved by integral waterproofing of the building elements e.g. waterproof concrete or by incorporating a continuous membrane externally or internally. The choice of system will depend on a number of factors including degree

of watertightness required, condition of the structure, intended use of the structure, type of finish required, time permitted for installation and last but not least cost. Kestral supply most of the systems available from the leading manufacturers in the construction industry.

■ Kestral CELLA-COTE

CELLA-COTE is a two pack, solvent free epoxy resin, surface applied damp proof membrane and primer.

CELLA-COTE has been developed as a primer system for concrete and for use in applications where high moisture levels are present. It can also be used as a surface applied damp proof membrane for suppressing residual moisture on concrete and masonry walls and floors.

- Can be applied to damp concrete
- Excellent adhesion even when applied to damp concrete
- Provides an integral surface applied damp proof membrane
- Solvent free, can be used in food environments
- Allows the early application of screeds or coatings onto new concrete

Available in 5 Litre kits.

■ Tremco illbruck Balcony Systems

Tremco illbruck offer systems for refurbishing the surface of concrete balconys. The CP310 Tremdek Topcoat Plus is a decorative crack bridging waterproofing system which provides a barrier that protects the concrete from attack by salts and other air pollutants, and also prevents water going through cracks in the concrete to fall on the balcony below.

Tremco illbruck is a single component polyurethane coating.

■ Tremco ES300

ES300 is a two part epoxy moisture vapour suppressant and surface damp proof membrane.

Developed specifically for suppressing residual moisture on concrete and sand/cement subfloors and provides a surface damp proof membrane.

- Can be used as a sandwich damp proof membrane and bonding agent for quick-cure screed
- Allows the early laying of floor coverings to sand/cement and concrete bases
- Cures in half the time of conventional epoxy systems
- Approved by major floor covering manufacturers
- Cost effective

■ Flexcrete FASTFILL WP

Rapid setting, polymer modified cementitious mortar for arresting water seepage and infiltration under pressure through cracks, joints and voids in concrete and masonry. Can also be used for rapid sealing and jointing in and around pipework, or in water retaining structures. Sets in 2 minutes at 20°C.

FASTFILL WP is a single component, polymer modified, fibre reinforced, Portland cement-based plugging and sealing compound. When mixed with water it exhibits unique hydraulic properties to produce a rapid setting mortar which can arrest water seepage and infiltration through joints, cracks or porous areas in concrete and masonry structures. It is ideally suited for sealing in and around pipework and for forming fillets in tanking situations.

Packed in 8kg pack.

■ Ronacrete Monoplug Rapid Water Stop

Monoplug Rapid Water Stop is used to stop the flow of water seeping or running through concrete or brickwork and other building surfaces.

Rapid-set water stop that can be quickly rendered or painted, sets in 3-4 minutes @ 20°C.

Supplied as a fine powder it is mixed with water to produce a putty or dough-like consistency which can be kneaded and shaped by hand. It must be hand mixed close to the area of use and is only used in small volume.

Once mixed the material will harden within seconds or minutes, depending on the temperature of the Monoplug Rapid Water Stop and the water and the amount mixed, and must therefore be mixed close to the area of application.

The surface on which Monoplug Rapid Water Stop is being applied must be prepared to remove any loose concrete, brick etc and provide a sound, clean and strong substrate. Note that a weak surface may be inadequate to resist the pressure of water penetration from behind.

- Rapid-set water stop
- Mix with water and apply
- Non-toxic
- Easy to use
- Can be quickly rendered or painted

call Kestral on 01744 830001
F 01744 830002 e sales@kestral.net w www.kestral.net



Waterproofing and Damp Proofing

■ Flexcrete CEMPROTEC ELASTIC

CEMPROTEC ELASTIC is an elastomeric, cementitious modified, polymer-rich coating which maintains its flexibility under permanent immersion and when exposed externally. It is ideally suited for waterproofing and protecting concrete and masonry structures which exhibit cracking and where further movement is expected. Typical applications include the sealing of water tanks, waterproofing of exposed, buried or green roofs, and use as a crack isolation membrane on concrete floors or screeds. It can be reinforced with CEMPROTEC Geo80 over generally cracked substrates or CEMPROTEC 2000-S to treat formed joints and dominant cracks.

CEMPROTEC ELASTIC is a two component, cementitious modified, polymer-rich coating with excellent adhesion to prepared concrete and masonry substrates. When mixed it exhibits a good degree of thixotropy to enable ease of application by brush or spray techniques to give an even finish with no sagging, even in vertical situations. It hydrates to form a durable, highly alkaline, permanently elastomeric coating which not only protects the concrete or other substrates from water penetration and carbon dioxide diffusion, but also accommodates movement in cracks. It is non-hazardous and ideally suited for application in confined spaces. Cracks and joints, where further movement is expected.

Available in Grey - 30kg bags and White - 15kg bags.

■ Flexcrete CEMPROTEC E942

CEMPROTEC E942 incorporates the benefits of copolymer and epoxy resin technologies into a water based cementitious system to give a hard, durable coating with excellent resistance to water, chloride ions, oxygen and aggressive chemicals. Can be used as a stand-alone anti-corrosion coating for ferrous metals as well as waterproofing and protection of concrete where enhanced chemical and abrasion resistance is needed.

CEMPROTEC E942 is a two component, water based, epoxy and polymer modified cementitious coating for the protection of concrete and ferrous metals. Easy application by brush or spray to give a smooth surface finish without sagging. Hydrates to a dense, highly alkaline coating with polymeric and resinous properties, offering low permeability to water and very high diffusion resistance to chloride ions and oxygen, to ensure long term protection. It is specially formulated to chemically accelerate the passivation of ferrous metals and give maximum adhesion to steel and concrete. Proven to be suitable for use in conjunction with cathodic protection systems at up to 95°C. Can be reinforced with CEMPROTEC 2000-S tape to accommodate movement around details and over cracks and joints.

Available in 15kg bags. Coverage 4m² at 2mm thickness.
Available in 30kg bags. Coverage 8.1m² at 2mm thickness.

■ Flexcrete CEMPROTEC Clutch Fillers

CEMPROTEC CLUTCH FILLER is a uniquely formulated cementitious material for sealing the surface gap at the interlock or clutch between piles prior to the application of a Flexcrete cementitious anti-corrosion coating.

CEMPROTEC CLUTCH FILLER is a two component, water based, epoxy and cementitious modified polymer mortar for sealing the interlock or clutch between sheet piles. It incorporates advanced cement chemistry, microsilica, fibre, epoxy and styrene acrylic copolymer technology to provide multi-functional protection with enhanced chemical resistance. When mixed, it can be applied with a pointing gun exhibiting a high degree of thixotropy to enable ease of application and filling of the void without sagging. It is specially formulated to chemically accelerate the passivation of ferrous metals even in the presence of chlorides and give maximum adhesion to steel.

Available in 16.5kg bags. Treats 85 linear metres of 10 x 10mm joint.

■ Flexcrete CEMENTITIOUS COATING 851

CEMENTITIOUS COATING 851 is designed for internal and external structural waterproofing of concrete and other mineral substrates. Resists positive and negative pressure under 100m head in water retaining and below ground structures as well as roofs and decks. Provides chloride protection on highway and coastal structures and enhances the durability of reinforced concrete by reinstating effective cover to achieve the specified design life.

CEMENTITIOUS COATING 851 is a two component, thixotropic, cementitious modified polymer coating with high adhesion to both concrete and steel. CEMENTITIOUS COATING 851 forms a hard, highly alkaline coating with a degree of elasticity which not only protects the concrete, or other substrates, from the effects of aggressive acid gases, moisture and chlorides, but also has greatly enhanced chemical resistance. It is particularly suited for the protection of concrete in sulphate contaminated ground conditions. Can be reinforced with CEMPROTEC 2000-S tape to accommodate movement around details and over cracks and joints. where further movement is expected.

- On repaired and normal concrete surfaces, a 30kg pack at 2mm thickness will cover 8.33m²
- Excellent adhesion to sound prepared concrete substrates and steel.
- Brush, trowel or spray applied normally in two coats. Floors and decks are a one coat application
- Non-toxic when cured and is listed as authorised under Regulation 31 for use in the supply of drinking water

Available 30kg pack.



call Kestral on 01744 830001

F 01744 830002 e sales@kestral.net w www.kestral.net

Waterproofing and Damp Proofing

■ Fosroc® Mulseal DP

Bitumen / rubber latex damp proofing emulsion, Mulseal DP single part bitumen latex emulsion is applied by brush or squeegee. The incorporation of rubber latex imparts elasticity to the dried coating. Mulseal DP is suitable for use on most building materials such as concrete, brickwork, metals and stone. It is easily applied and may be used on damp surfaces, provided that no free water is present. It can also be applied to "green" concrete immediately shuttering has been struck. Where it is used as a sandwich membrane in floors, Mulseal DP should have continuity with the damp courses. Porous surfaces such as concrete or block work must be treated with a priming coat.

Designed for use in damp proofing applications. Mulseal DP is suitable for uses such as a damp proof membrane to retaining walls, as a vapour barrier to panels and repairing fine cracks in asphalt surfaces.

- Excellent adhesion to most common building materials
- Low water vapour permeability
- Can be applied to "green" concrete
- Resistant to sulphates and ground salts
- Dries to a flexible film

Supplied 5 litre tins, 25 and 200 litre drums. Yield 1.1 to 1.4m²/litre per coat.

Fosroc Primer B2: 5 litre tins. Yield 6 to 8m²/litre.

■ Fosroc® Proofex Cavitydrain

Proofex Cavitydrain is a profiled HDPE with ribbed conical voids spaced to permit high water flow through a permanent void against the sub-structure face.

Mortar is poured into the conical voids on the internal face of the drainage former allowing high load transfer to structural elements.

Two grades are available. Proofex Cavitydrain 80 is a cost-effective solution for vertical applications and Proofex Cavitydrain 200 is for both horizontal and vertical applications.

Proofex Cavitydrain is used where sub-structures are constructed in concrete designed to minimise water entry in accordance with BS 8102:2009 'Protection of structures against water from the ground', Type C.

- Internal application in a controlled environment increases security against waterproofing failure
- Provides a continuous drainage former and damp proof barrier
- High compressive strength
- Conical voids enable high load transfer to structural elements
- Chemically resistant
- Easily fixed and installed using mechanical fixings
- Vertical and horizontal grades available

Proofex Cavitydrain 80 supplied as 2m x 30m roll.

Proofex Cavitydrain 200 supplied as 2m x 20m roll.

■ Fosroc® Proofex 3000

Proofex 3000 is a cold applied, flexible, waterproof, high performance membrane incorporating a cross laminated HDPE carrier film with a polymer modified bitumen compound.

Proofex 3000 should be laid in accordance with the provisions of BS 8102 : 2009. Where Proofex 3000 is being used as a floor DPM, there should be continuity with wall DPCs and other DPMs used in the structure. If methane presence is suspected, a comprehensive site survey needs to be carried out.

Vertical and suspended slab surfaces shall be primed with Proofex Primer or Nitobond HAR. Ancillary Products available refer to Proofex 3000MR data sheet for further information.

- Cross-laminated HDPE film for protection against damage
- Dimensionally stable
- Combines toughness with flexibility for detailing around corners
- Self adhesive layer system makes installation quick, simple and reliable
- Resistant to ground water, soluble sulphates and chlorides
- Suitable for waterproofing basements grades 2 and 3 as defined in BS 8102 : 2009, 'Protection Of Structures Against Water From The Ground'
- Radon protection as defined by BRE report 211.
- BBA approved product

Proofex 3000 supplied as 1m x 20m roll.

■ Fosroc® Proofex 3000MR

A high performance self adhesive membrane for resisting methane, radon and CO₂, and preventing water entering buildings. Proofex 3000MR also provides a vapour and waterproof membrane to water excluding structures and protects concrete from attack by aggressive ground salts.

Proofex 3000MR should be laid in accordance with the provisions of BS 8102 :2009. Vertical and suspended slab surfaces shall be primed with Proofex Primer or Nitobond HAR.

- Aluminium film provides methane, radon and CO₂ resistance, protection against damage and gives dimensional stability
- Solar reflective finish reduces heat gain, whilst membrane is exposed during construction.
- Combines toughness, with flexibility for detailing around corners, pipes, etc.
- Self adhesive layer system
- Resistant to ground water, soluble sulphates and chlorides
- Suitable for waterproofing basements grades 2 and 3 as defined in BS 8102 : 2009, 'Protection Of Structures Against Water From The Ground'
- BBA approved product

Proofex 3000MR supplied as 1m x 20m roll.

Proofex Primer supplied as 5ltr and 25ltr drums. Coverage 6 to 8m²/litre.

Nitobond HAR supplied as 1, 5 and 25 litres packs. Coverage 4 to 6m²/litre.



Waterproofing and Damp Proofing

■ Fosroc® Proofex Engage

Proofex Engage is a pre-applied membrane which mechanically bonds to poured concrete.

This unique patented waterproof membrane system incorporates a cell mesh, bonded to a blended polyethylene/polypropylene membrane, which allows poured concrete to interlock, forming a tenacious mechanical bond.

Proofex Engage provides water, water vapour and gas protection to water excluding structures and protects concrete from aggressive ground salts, chemicals and hydrocarbons.

Proofex Engage is supplied with a self-adhesive selvedge along one side of the roll to provide sealed laps and a comprehensive range of auxiliary products to simplify the application process.

- BBA and Green Label approved.
- Smart antitracking design prevents water tracking between membrane and concrete
- Simple and quick to install - no protection film to remove
- Basement waterproofing protection to grades 1, 2 and 3 as defined in BS 8102:2009
- Methane and CO₂ protection as defined in BRE Report 212
- Radon protection as defined in BRE Report 211
- Protects concrete from attack from chemicals, hydrocarbons and aggressive ground salts in contaminated sites
- Simple application - requires no primer or protection, and blinding concrete may be eliminated
- Inert product - no risk of a reaction with ponded water prior to concrete being poured
- Membrane composition gives excellent flexibility for detailing, combined with high durability and toughness for site trafficking.

Proofex Engage supplied as 1.27m x 30m roll.

■ Fosroc® Proofex LM

Two component bituminous liquid for use with Proofex waterproofing systems.

For the waterproofing of intricate details e.g. pipe entries, covings etc.

- For external waterproofing of underground structures
- Can be applied to damp surfaces
- Resists hydrostatic head of up to 70 metres
- Seamless - flexible with crack-bridging capabilities
- Simple trowel application
- Solvent-free - environmentally friendly and harmless to ground water
- Resistant to aggressive ground water
- Compatible with Proofex waterproofing systems

Proofex LM supplied as 28kg pack.

■ Fosroc® Renderoc Plug

Rapid setting cement-based, water-stopping mortars conforming to the requirements of BS EN 1504 Class R1.

Renderoc Plug is supplied as a ready to use blend of dry powders which requires only the site addition of clean water to produce a highly consistent, rapid setting mortar which is easy to apply in many difficult conditions. The material is based on a blend of cement, graded aggregates, special fillers and chemical additives which control the rate of set and minimise the risk of thermal cracking.

There are two grades available: Renderoc Plug 1 with an initial set time of approximately 1 minute, and Renderoc Plug 20 with an initial set time of approximately 20 minutes. (Set times are based on ambient/substrate temperatures of 20°C.)

- Emergency water-stopping capability
- Single component - only the addition of clean water is required
- Excellent bond to the substrate.
- Low exotherm minimises thermal cracking
- Contains no chloride admixture

Renderoc Plug 1 supplied in 6kg bags.

Yield 3 litres per bag.

Renderoc Plug 20 supplied in 25kg bags.

Yield 12.5 litres per bag.

■ Fosroc® Supercast SW

Swellable waterstops for in-situ concrete.

Supercast SW range consists of swellable waterstops; Supercast SW formed sections, Supercast SWX gun-applied paste and Supercast SW Adhesive.

Expansion of the waterstop creates a positive pressure against the faces of the concrete joint, thus preventing water passing through the joint.

Supercast SW waterstops are high performance products with excellent long term durability through wet/dry cycling and can withstand 1bar water pressure after 1 day cast in concrete.

- Easy to install by adhesive bonding, or casting into joint faces
- Tolerant of salts in concrete and groundwater
- Sustains effective seal in wet conditions
- Highly adaptable to accommodate complex joint shapes
- Supercast SWX enables full integration of Supercast SW and Supercast PVC networks

Supercast SW10 supplied in 5mm x 20mm x 15m rolls.

Supercast SW20 supplied in 10mm x 20mm x 5m rolls.



call Kestral on 01744 830001

F 01744 830002 e sales@kestral.net w www.kestral.net

Waterproofing and Damp Proofing

■ Fosroc® Supercast SWX

Problem-solving gun-grade hydrophilic waterstop and adhesive.

Supercast SWX is a grey, elastomeric water-swellable paste which is applied like a sealant. The hydrophilic properties of Supercast SWX display good consistency in swell rate during repeated wet/dry cycling. Expansion of the product on contact with water creates a positive pressure against the faces of the concrete joint, thus preventing the passage of water.

- Enables early concrete pour and rapid return to service.
- Allows hand-applied concrete cover within 2 hours on emergency repairs and large-scale concrete pour after 8 hours.
- Excellent seal on rough concrete: Gives improved water tightness.
- Plugs inequalities in rough concrete to produce a tight seal.
- Excellent adhesion: Quick and easy to apply to a variety of damp and uneven joint surfaces remaining firmly in place during concrete pour.
- Water swellable: Expands by 200% producing a watertight compression seal.
- Excellent wet/dry cycling retaining elastomeric character and swelling performance due to high tolerance of the cementitious environment.

Supercast SWX is supplied in 310ml gun cartridges, singly or in boxes of 20 cartridges.

■ Fosroc® Supercast PVC waterstops range

Centrally and externally placed PVC waterstops.

Supercast waterstops are extruded from a high grade PVC compound which has been formulated to give excellent flexibility and longevity characteristics. They are available as straight lengths and factory produced intersections or as a factory prefabricated segment of a network to minimise site jointing.

The range consists of centrally placed profiles; Supercast Hydrofoil and Supercast XHD Hydrofoil; and externally placed profiles; Supercast Rearguard S.

The Supercast range of PVC waterstops is designed to provide an integral sealing system for movement and construction joints in concrete cast in-situ. These joints typically occur in the following types of structure: Reservoirs, water towers and sewage tanks, dams, culverts, canals and spillways, swimming pools and bunded areas surrounding liquid retaining tanks.

- Range of profiles to suit every need
- Fully continuous 4 bulb network
- Reinforced eyeletted edge flanges for positive fixing
- Simple on-site jointing
- Full range of moulded and fabricated intersection pieces
- WRc approval for use in contact with potable water

■ Fosroc® Supercast Synkoflex FR

Fuel-resistant, non-swelling preformed plastic adhesive waterstop for concrete joints.

Supercast Synkoflex is a non-swelling preformed plastic adhesive waterstop of dimensions 25mm x 25mm. It can be laid onto fresh concrete, or applied to existing concrete when used in conjunction with Supercast Synkoflex Primer.

Supercast Synkoflex FR is a fuel-resistant, non-swelling preformed plastic adhesive waterstop of dimensions 12mm x 30mm. It can be laid onto fresh concrete, or applied to existing concrete when used in conjunction with Supastik E10 Adhesive.

- Can be applied onto freshly poured concrete
- Can be applied onto existing concrete which is primed with Supercast Synkoflex Primer or Supastik E10 Adhesive (for Supercast Synkoflex FR)
- Fuses with fresh concrete, allowing it to be applied with a minimum cover of 25mm
- Not affected by rainwater, allowing prolonged delays between application and concrete pour
- Can be easily joined to Fosroc Supercast PVC waterstops at expansion joints
- Highly adaptable to accommodate complex joint shapes
- Resistant to chemicals
- Fuel resistant (Supercast Synkoflex FR only)
- Cost – effective installation.

Supercast Synkoflex FR supplied in x of 6 x 5m rolls 12mm x 30mm.

Supastik E10 Adhesive 10 - 13m per 2 litre pack @ 75mm wide.



Waterproofing and Damp Proofing

■ Visqueen Zedex CPT DPC

Visqueen Zedex CPT high performance DPC & cavity tray system is manufactured from co-polymer thermoplastic (CPT) providing all the characteristics necessary for it to perform effectively for the lifetime of the building in which it is incorporated.

Width (mm)	Length (m)	Roll (m ²)
100	20	2
150	20	3
225	20	4.5
300	20	6
450	20	9
600	20	12
900	20	18
1000	20	20
1200	20	24



■ Visqueen Zedex CPT High Performance DPC

Zedex CPT High Performance DPC is a new generation damp proof course that provides superior performance under high compressive loads. Manufactured from co-polymer thermoplastic (CPT) it provides superior strength, adhesion and water impermeability, enabling it to perform effectively for the lifetime of the building in which it is incorporated. With BBA certification, Zedex CPT DPC includes a range of Pre-Formed Cavity Tray Units (top hats/cloaks) and a Jointing Tape System to suit all applications.



- Outperforms all other DPCs
- Contains no pitch, bitumen or PVC
- Low permeability to Radon and Carbon Dioxide gases
- BBA accredited (Cert. No..94/3059)

■ Visqueen Waterproof Tanking Self-Adhesive Membrane

Designed for use in both horizontal and vertical tanking and waterproofing applications, such as basement waterproofing, lift pits or at high ground levels, Visqueen Self-Adhesive Membrane offers a two ply solution that prevents the ingress of water and other water-borne alkalis present in some mortar and concrete.

BBA accredited Visqueen Self Adhesive Membrane should be installed in accordance with BS8102:2009, and substrates should always be primed with Visqueen HP Tanking Primer to ensure optimum adhesion on installation.



- High density self-adhesive tanking membrane
- High puncture and tear resistance
- BBA accredited (Cert. No. 01/3820)
- For optimum adhesion prime with Visqueen HP

■ Visqueen DPC Jointing Tape

A high performance double sided butyl tape for bonding Visqueen Damp Proof Courses (DPC) at overlaps.

- Resists Moisture & Gas Ingression
- Excellent adhesion
- BBA Approved

Sizes

100mm x 15m
100mm x 10m
50mm x 10m



call Kestral on 01744 830001

F 01744 830002 e sales@kestral.net w www.kestral.net

Waterproofing and Damp Proofing

■ Visqueen TorchOn Tanking Membrane

Ideal for heavy duty tanking applications such as basements, lift pits, reinforced concrete slabs and retaining walls, Visqueen TorchOn Tanking Membrane is a robust waterproofing membrane designed for both horizontal and vertical applications, above and below ground level.

Substrates should be primed with Visqueen High Performance Tanking Primer prior to application and membranes should subsequently be protected from site traffic and footfall with Visqueen TreadGUARD1500 heavy duty protection board.



- BBA Accredited (Cert No. 10/4754)
- High performance in cold weather
- Torch bonded laps provide a homogeneously sealed junction
- Robust waterproofing for horizontal and vertical applications

■ Visqueen Tapes

The Visqueen portfolio incorporates a range of system tapes to ensure effective installation.

- VisqueenPRO Single Sided Jointing Tape: A new high performance double strength tape for sealing DPMs and Radon Membranes
- VisqueenPRO Double Sided DPM Jointing Tape: A high quality tape for effective watertight bonding of DPMs and Radon Membranes
- GX Geomembrane Bonding Tape: A high quality Hydrocarbon protection tape ensuring a gas and watertight seal
- Gas Resistant Foil Sealing Tape: A high shear strength gas foil tape for effective sealing of laps and joints



- Zedex DPC Jointing Tape: A high integrity double sided tape for Zedex DPC jointing and surface fixing

■ Visqueen Pre-formed Units (Top Hats/Cloaks)

An integral part of the Zedex damp proofing system, Visqueen pre-formed Cavity Tray Units simplify the awkward and time consuming process of corner detailing, and eliminate the likelihood of water ingress at complex junctions.

Units should be sealed to a Visqueen Gas Barrier using Visqueen Gas Barrier Jointing Tape and Visqueen Foil Backed Girth Jointing Tape.

- Reduces installation times and complexities at awkward junctions
- Built-in and surface fixed design options
- Dedicated free design support service
- Damp proofing and gas proofing units available



call Kestral on 01744 830001

F 01744 830002 e sales@kestral.net w www.kestral.net



Flooring

Our range of Flooring products are designed to meet the most stringent demands across a wide spectrum of Industries. Whether you require abrasion resistance, chemical attack, hygiene standards, anti-slip, dust sealing and line-marking. Our wide range of repair mortars are designed to reinstate damaged or dangerous holes in concrete floors,

repair eroded or damaged concrete, bay edges and broken steps. Kestral's screed products can also be used to make up differences in floor levels. With our wide range of products we aim to provide solutions to all your flooring problems.

■ Kesfloor DPM 1

High performance structural coatings.

Kesfloor DPM1 is a two part epoxy moisture vapour suppressant and surface damp proof membrane. Tested to European Standard pr EN 104. (16)

Kesfloor DPM1 is specifically designed for use as a one coat moisture vapour suppressant for power floated concrete.

Packed in 2kg, 5kg & 10kg units.

■ Kesfloor DPM 2

Surface Damp Proof Membrane.

Kesfloor DPM2 is a two part epoxy moisture vapour suppressant and surface damp proof membrane. Tested to European Standard pr EN 104. (16)

Kesfloor DPM2 is used to form a surface damp proof membrane and moisture vapour suppressant to concrete and sand/cement floors.

Packed in 5 litre units.

■ Kesfloor ECLMP

Kesfloor ECLMP is a solvent based, high gloss, high performance two pack epoxy coating having good abrasion and chemical resistance. Ideal for floors, walls and line markings.

Hard, tough and abrasion resistant, good chemical resistance, impervious finish ensures ease of cleaning and excellent adhesion to cementitious substrates etc.

Kesfloor ECLMP is a two pack epoxy system packed in 5 litre units.

■ Kesfloor PC120

PC120 is a solvent free 2 pack polyurethane resin system, designed as a high quality flexible coating.

This system can be applied to all areas even where the substrate tends to expand and contract with the weather.

PC120 is a three part system packed in 5 litre units of resin plus aggregate.

■ Kesflo or EPP - Epoxy Penetrating Primer

EPP is a two part penetrating epoxy resin priming system used for the priming of substrate for the majority of our coatings and screeds etc.

It is a coating in its own right, 100% active binder, free from solvents and fillers. It is of low viscosity and maximum penetration, soaking into the capillary pores, actually strengthening the substrate. When EPP is applied thickly enough to a surface, chippings will adhere and provide excellent anti-slip surfaces. It can also be used for filling small cracks & voids up to a maximum of 9mm.

The coverage rate will be affected by the film thickness, porosity of the surface and its texture. The coverage rate for EPP is 25 sq.m per 5 kg pack.

EPP is a two pack system packed in 5kg & 10kg units.



call Kestral on 01744 830001

F 01744 830002 e sales@kestral.net w www.kestral.net

■ Kesfloor HB Epoxy

Kesfloor HB Epoxy is a solvent free, 2 pack epoxy coating having good abrasion and chemical resistance. Kesfloor HB Epoxy provides an easily cleaned floor and wall coating, ideal for use in production areas, breweries, food and chemical processing areas. Anti-slip aggregate is also available, for use where a slip resistant surface is required. Please call our technical department with your requirements.

Hard wearing, very good chemical resistance, impervious finish, ensures ease of cleaning, excellent adhesion to cementitious substrates etc

Kesfloor HB Epoxy is a two pack epoxy system packed in 5 litre & 15 litre packs.

■ Kesfloor WB Sealer

Kesfloor WB Sealer is a water dispersible epoxy primer/sealer having excellent adhesion to concrete. Can be applied to newly laid, damp or dry mature concrete.

Anti-slip aggregate is also available, for use where a slip resistant surface is required. Please call our technical department for more information.

Low odour - ideal for food processing areas. Good penetration properties because of its low viscosity. Easy to apply. Low cost. Improves chemical resistance of concrete. Excellent adhesion to many types of substrate.

Kesfloor WB Sealer is supplied in 5 litre units.

■ Kestral Anti-Slip Stair Tread Covers

Kestral Anti-slip Stair Treads are high performance safety treads made from high quality GRP (Glass Reinforced Plastic) embedded with long lasting anti-slip grit which are twice as hard wearing as the industry standard quartz.



- Hard-wearing anti-slip step surface
- Highly durable for medium to heavy stair use
- DDA (Disability Discrimination Act) and Building Regulations compliant
- Suitable for metal, wood and concrete stairs
- Available in a variety of sizes and colours
- Custom sizes available

■ Kestral Anti-Slip Stair Nosings

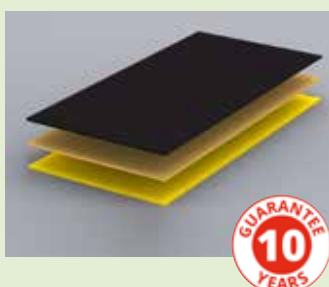
Kestral Stair Nosing provide a superior grip performance in extreme conditions, with excellent anti slip properties providing increased safety on steps and stairs and the high contrasting colour aids visibility.



- Anti-Slip
- Hard Wearing GRP Construction
- Installs Over Virtually Any Substrate
- High Contrast Colours
- Chamfered Edges
- High Performance Grit Formula
- DDA & Building Regulation Compliant
- Easy To Fit, Simply Screw and Glue to Wood, Steel, Concrete or Similar
- Cost Effective

■ Kestral Anti-Slip Flat Sheets

The Kestral Anti-slip Flat Sheet range are high performance stair treads, landing covers and flat sheets, made from high quality GRP (Glass Reinforced Plastic), a combination of resins and reinforcing fibres.



- Anti-Slip
- Hard wearing GRP construction
- Installs over virtually any substrate
- High contrast colours
- High performance grit formula
- DDA & Building regulation compliant
- Easy to fit, simply screw and glue to wood, steel, concrete or similar
- Cost effective

■ DCP Antislip PUW

Water based polyurethane anti-slip/sealer

Antislip PUW is a clear matt, two component water based polyurethane anti/slip sealer that works effectively based on internal smooth concrete, concrete screeds, wood, parquet, vinyl flooring, epoxy and polyurethane resin floor coatings.

- Approximately 50-60m² per pack/coat
- Recommended wet film thickness: 160- 200 microns - 2 coats roller applies

Antislip PUW Sealer is supplied in 4.9kg kit.

Flooring

■ DCP Setseal 6

Setseal 6 is a clear, acrylic resin based concrete curing membrane and sealer. Single pack solution designed to impregnate concrete surfaces combining the benefits of a curing aid, sealer, dust proofer and hardener. Setseal 6 has been designed to overcome the drawbacks of many commonly used curing membranes which tend to provide a limited service life following the curing period of new concrete. It has good abrasion resistance and can be coated with certain coatings (please contact our Technical Department for specific applications).

- 5 - 12m² per litre per coat depending on the absorptency of the base by fine spray
- Clear liquid
- Curing efficiency 75% at 6m² per litre

Supplied in 25 and 200 litres.

■ MAPEI Latexplan Trade

Two-part smoothing/levelling compound, Latexplan Trade is used for levelling and smoothing differences in thickness of 1 to 10mm (in one application) on new and existing substrates to prepare them for any type of flooring installation. Mix 5kg of Latexplan Trade liquid to 25kg of Latexplan powder.

- Can be walked on after 1.5 to 2 hours
- Low odour
- Colour cement grey

Supplied in a 2 part system 5kg liquid to 25kg powder.

■ Flexcrete CEMPROTEC E-FLOOR

Epoxy and polymer modified cementitious topping, CEMPROTEC E-FLOOR is a major advancement in flooring technology incorporating the benefits of copolymer and epoxy resin technologies into a self smoothing, water based, cementitious system. This chemical combination gives a hard, durable 2mm thick coating with excellent resistance to abrasion, water, chloride ions and aggressive chemicals for the protection of concrete floors and decks subject to trafficking in the most demanding internal and external environments.

- One coat at 2mm
- Covers 8.1m² at 2mm thickness
- Two component mix

Supplied in 30kg packs.



■ DCP Stopdust

Stopdust Sealer is for interior wall and floor surfaces, it is a water-based acrylic-polymer emulsion that is used to seal cementitious wall and floor surfaces.

Stopdust is applied by roller, brush or squeegee in one or more coats and dries to a clear, dust-free and hygienic finish. It has good durability to pedestrian and vehicular traffic.

- Good penetration
- Can be applied to freshly hardened concrete
- Approximately 10m² per kg per coat

Supplied in 25kg kit form.

■ MAPEI Ultraplan Renovation Screed

Fibre reinforced self levelling compound, designed for use in the refurbishment of existing floors in both commercial and domestic applications, it can be hand or pump applied.

For interior use on new or existing concrete, screeds, stone, terrazzo and ceramic tiles, old and new timber floors, floor boards, chipboard panels, plywood and parquet.

- Single coat application 3 to 30mm thickness
- Colour grey
- Walkable after 3 to 5 hours
- Covers 6m² at 3mm thickness

Supplied in 25kg bags.

■ RonaScreed Mortar and Concrete

A rapid strength gain mortar for laying floor screeds, repairing floor surfaces and rapid set bedding applications for bricks, blocks, kerbs and compatible building components.

Rapid early strength development, ready for vehicle traffic after 6 hours (Concrete) or 24 hours (Mortar). Pre-packed formulations for consistent high performance.

Supplied in 25kg bags.

■ Flexcrete CEMPROTEC E-FLOOR HB

CEMPROTEC E-FLOOR HB is a major advancement in flooring technology incorporating the benefits of copolymer and epoxy resin technologies into a self smoothing, water based, cementitious topping. This chemical combination gives a hard, durable 3 - 6mm thick coating with excellent resistance to abrasion, water, chloride ions and aggressive chemicals for protection of concrete floors and decks subject to trafficking in the most demanding internal and external environments.

- One coat at 3 - 6mm
- Colour grey
- Covers 5m² at 3mm thickness
- Two component mix

Supplied in 30kg packs.



call Kestral on 01744 830001

F 01744 830002 e sales@kestral.net w www.kestral.net

■ Flexcrete CEMPROTEC EF Primer

Stabilises and Seals Cementitious and Asphalt Substrates.

To stabilise and seal cementitious and asphalt floors prior to the application of the CEMPROTEC range of cementitious coatings and mortars. It can overcome some inadequacies in surface preparation and helps minimise the risk of out-gassing from the substrate.

- Covers 25m² per 5 litre pack
125m² per 25 litre pack
- Ready to use
- Can be applied in one coat with brush or roller

Supplied in 5 and 25 litres.

■ Flexcrete CEMPROTEC Levelling Coat

Self-Levelling Cementitious Mortar for Concrete Floors.

CEMPROTEC LEVELLING COAT is a two component cementitious mortar for levelling tamped for uneven concrete floors in heavily trafficked areas prior to the application of CEMPROTEC E-FLOOR.

- 30kg composite pack covers 3m² at 5mm thickness
- Two component mix
- Can be applied in thicknesses ranging from 0 to 60mm
- Can be applied poured or pumped

Supplied in 30kg packs.

■ Fosroc® Nitoflor Lithurin

Permanent hardening and dustproofing compound for concrete surfaces. Nitoflor Lithurin is a white, soluble, crystalline powder based on metallic fluorosilicates and wetting agents.

When Nitoflor Lithurin is mixed with water and applied to the floor, the solution penetrates the concrete reacting with lime and other soluble particles to form granite hard crystals, leaving a permanent, hard wearing and dust free surface.

Used as a surface hardener for new and old concrete floor to prevent dusting and to increase durability. Suitable for use on concrete and granolithic surfaces. Typical applications include industrial floors, light engineering works, warehouses, animal feed and milk parlours, abattoirs, car parks, dams, reservoirs, tanks, silos and flues.

- Highly durable, improves abrasion resistance and reduces chemical attack from oils and greases
- Easy to apply, no special equipment or skills required
- Eliminates dust formation from within the treated surface
- Economical and low cost method of floor protection

Supplied in 15 kg buckets.

Coverage one coat, one bucket to cover approximately 200m². Two coats, one bucket per 150m²

■ Flexcrete CEMPROTEC SANDSEAL 75

Clear Lacquer for Concrete Floors.

CEMPROTEC SANDSEAL 75 is a hard wearing, single pack, solvent-based, polyurethane clear lacquer for protecting concrete floors and smooth CEMPROTEC E-FLOOR finishes. It can also be used in combination with sanded CEMPROTEC E-FLOOR to help seal in and retain the sand to provide a slip resistant, decorative surface with excellent abrasion and wearing characteristics.

- 12m² per litre on smooth surfaces 6 - 7m² per litre on sanded finishes
- Ready to use
- Can be applied by roller or brush

Supplied in 5 litres.

■ Fosroc® Nitoflor FC130

Nitoflor FC130

Nitoflor FC130 is a two-component water dispersed epoxy resin coating system supplied in pre-weighed packs ready for on-site mixing and use. The cured film forms a hard, flexible, semi-matt seal to concrete and other substrates.

Provides a dust-proof easily cleaned surface, resistant to most oils and liquids.

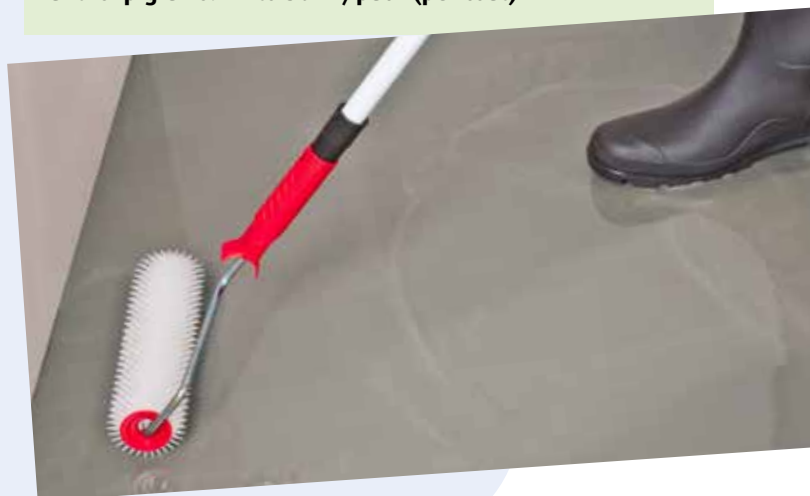
Suitable for use on walls and floors in warehouses, garages, light industrial and food processing areas, kitchens and other areas of pedestrian and light vehicular traffic.

- Hard wearing, durable, low maintenance costs
- High resistance to a wide range of industrial chemicals
- Impervious finish provides an easily cleaned hygienic surface
- available in a range of attractive colours to improve the working environment

Supplied in 5kg packs.

Nitoflor anti-slip grains in 0.9kg packs.

Coverage: 35 to 40m²/pack (per coat). Nitoflor FC140 with anti-slip grains: 24 to 30m²/pack (per coat)



■ Fosroc® Nitoflor FC150

Nitoflor FC150 is a solvent free, epoxy resin coating system for floors supplied in pre-weighed packs ready for onsite mixing and use. The system consists of a Nitoflor FC150 base, hardener and colour pot. A slip resistant finish can be obtained by use of one of our range of Nitoflor Antislip Grains which have been carefully graded to ensure an even texture.

Nitoflor FC150 is used to provide a hard wearing, easily cleaned, attractive floor coating in industrial areas where high resistance to chemical attack and an abrasion resistant floor finish is required. It is suitable for use in production assembly areas, workshops, dairies, soft drinks production and bottling plants, breweries, kitchens, showrooms and internal car parks. It is particularly suitable in wet working areas and where chemical spillage is likely, e.g. plating shops, processing plants and dye works.

- Durable, low maintenance costs
- High resistance to a wide range of industrial chemicals
- Impervious finish provides easily cleaned surface
- No odour during application
- Available in a range of colours to improve the working environment
- Slip resistant - different textures available to suit conditions

Supplied as Nitoflor FC150: 4.5 litre packs.

Nitoprime 25: 5kg packs. Nitoflor anti-slip grains: 25kg.

Coverage: Nitoflor FC150: 18m²/pack (per coat).

Nitoprime 25: 26m²/pack.

■ Fosroc® Patchroc GP

Patchroc GP is supplied as a ready to use blend of dry powders which requires only the site addition of clean water to produce a highly consistent repair mortar.

Based on Portland cements, graded aggregates, and chemical additives providing a mortar with good handling characteristics while minimising water demand. The low water requirement ensures good strength gain and long-term durability.

Patchroc GP is designed for horizontal use. It may be applied up to a maximum thickness of 100 mm. Thicker sections can be built up in layers. Material should not be applied at less than 12mm thickness. Individual bay sizes should not exceed 4m². Consult the local Fosroc office for further information.

- Rapid strength gain - will generally accept traffic in 2 hours.
- High strength, abrasion and weather resistance
- One component, pre-bagged to overcome site-batched variations
- Excellent bond to the concrete substrate
- Shrinkage compensated
- Contains no chloride admixtures

Supplied as 25kg bags.

Coverage: Approximately 12 litres/25kg bag (approximately 1.0m² at 12mm thickness).

■ Fosroc® Nitoflor Hardtop S

'Dry shake' floor hardener for new concrete floors. Nitoflor Hardtop S surface hardening compound is a quality controlled, factory blended powder which is ready to use on site. It consists of special hard wearing aggregates selected for their physical properties of abrasion and wear resistance, Portland cement and special additives to improve workability.

This combination produces a material which is easy to trowel into the surface of fresh, wet concrete. Nitoflor Hardtop S cures to provide a dense, non porous surface which is extremely hard wearing and abrasion resistant. Monolithic cure ensures that problems normally associated with thin ('granolithic') screeds, e.g. curling, shrinkage, cracking, etc. are completely overcome. Nitoflor Hardtop S is available in natural (concrete grey) colour as standard.

It is ideally suited for all industrial areas subjected to heavy traffic, e.g. power stations, heavy industry, agricultural buildings, warehouse floors, loading bays and workshops.

- Supplied ready to use
- Provides a hard, abrasion resistant surface
- Forms monolithic bond with fresh concrete base
- Will not rust when wet
- Non dusting
- Anti-slip

Supplied Nitoflor Hardtop S in 25kg bags.

Coverage 5 kg/m² / 3 kg/m²

■ Fosroc® Paveroc

Paveroc is supplied as a ready to use blend of dry powders which requires only the site addition of clean water to produce a highly consistent repair mortar.

Paveroc is designed for horizontal use. It may be applied up to a maximum thickness of 100mm. Thicker sections can be built up in layers. Material should not be applied at less than 12mm thickness. Individual bay sizes should not exceed 18m². Consult the local Fosroc office for further information.

For the reinstatement of large areas of concrete pavements and floors to avoid the total replacement of bays.

The product is alkaline in nature and will protect embedded steel reinforcement. It may be used internally and externally. Patchroc GP is recommended for emergency patching of small areas of concrete pavements and floors.

- Rapid strength gain - will generally accept traffic in 12 hours.
- High strength, abrasion and weather resistance
- One component, pre-bagged to overcome site-batched variations
- Excellent bond to the concrete substrate
- Shrinkage compensated
- Contains no chloride admixtures

Supplied as 25kg bags.

Coverage: Approximately 11.5 litres/25kg bag (approximately 0.9m² at 12mm thickness).



call Kestral on 01744 830001

F 01744 830002 e sales@kestral.net w www.kestral.net

■ Tremco CS150 Acrylic Primer

CS150 Acrylic Primer is a universal primer for porous substrates.

CS150 Acrylic Primer is specifically designed for use as a primer for polymer screed applications or beneath smoothing compounds on porous substrates.

- Low hazard
- Easy to apply
- Helps to prevent pin-holing
- Helps maintain the flow characteristics of the screed
- Colour white
- Apply by brush or roller

Supplied in 25 litres and 5 litres.

Coverage 8m² per litre depending on substrate.

■ Tremco CS900 High Build Epoxy Coating

CS900 is a high build, thickly applied solvent free coating possessing excellent wear and acid resistance. The finished product is attractive and tough enough to withstand industrial usage. Once cured, CS900 offers excellent chemical and abrasion resistance.

For use in factories, warehouses, chemical plants, effluent plants, electronic, pharmaceutical, engineering and food production premises.

- Solvent free
- Tough, attractive finish
- Excellent wear and acid resistance
- Light Grey and Mid Grey are the standard colours. Other colours and special colours may be available
- Brush or roller applied

Supplied in 14kg (2 component kit).

Coverage 60m².

■ Tremco CS930 Epoxy Dustproof

CS930 is a hard wearing, hygienic, attractive, and solvent free water dispersed epoxy floor coating. Good adhesion to most clean and dry substrates. Excellent chemical and wear resistance.

For use in factories, warehouses, chemical plants, electronic, pharmaceutical, engineering and food production premises. CS930 can also be used as a primer under CS900 Epoxy Coating.

- Solvent free
- Hygienic
- Good adhesion to most substrates
- Colour medium grey

Supplied in 10kg (2 component kit).

Coverage 7 to 8m² per kg depending on the porosity of the substrate.

■ Tremco CS350 Self Smoothing Epoxy Screed

CS350 is a high performance self-smoothing epoxy resin flooring system. It provides a hygienic, dust free floor with excellent mechanical and chemical resistance.

For use in industrial and commercial floors in laboratories, schools, plant rooms, factories, engineering workshops, hospital clean rooms and many more applications.

- For hygienic, dust free floors
- Excellent mechanical and chemical resistance
- Colour light grey

Supplied as a three component system comprising resin, curing agent, and aggregate, a total of 20.5kg.

Coverage 5.5m² - 6m² per 20.5kg unit at 2mm.

■ Tremco CS375 Industrial Wearing Screed

CS375 is a cementitious, self levelling flooring compound for interior applications.

CS375 is specifically designed for industrial warehouses, and production areas where wear resistance is essential.

- High abrasion resistance
- Accepts full forklift traffic and is extremely durable
- Can be pumped up to 2,000m² per day with an application range of 5mm - 25mm providing a quality solution that is quick and cost effective to apply
- Can be overcoated with CS930 Epoxy Dustproof & CS900 Epoxy Coating to provide a decorative functional finish
- Very low VOC / protein free, the product complies with HTM 61 requirements
- Colour grey

Supplied in 25kg plastic lined reinforced paper sack.

Coverage 1.7kg/mm/m².



call Kestral on 01744 830001

F 01744 830002 e sales@kestral.net w www.kestral.net



Flooring

■ Tremco ES100 One Coat Universal DPM

ES100 is a two part, epoxy based damp proof membrane.

ES100 has been developed specifically for suppressing residual moisture in concrete and sand/cement subfloors and provides a guaranteed surface damp proof membrane with a single coat liquid application.

- Accommodates up to 97% RH
- Solvent free
- Very cost effective single coat application reducing time on site
- Suitable with underfloor heating
- Suitable for heated concrete and sand cement screeds (provided the surface temperature does not exceed 27°C in accordance with BS 8203 and BS 5325)
- Colour slate grey

Supplied in units of 10kg or 25kg.

Coverage approximately 20 - 24m² per 10kg unit depending on method of application and condition of substrate to give a dry film thickness of approximately 250 - 350 microns per coat.

■ Tremco SX100 Fibre Reinforced Smoothing Compound

SX100 is a fibre reinforced, self-levelling flooring compound for interior applications.

Designed for application to existing floors prior to the application of floor coverings including: vinyl, carpets, ceramic tiles, wood, etc.

- Fast application and minimum down time
- Can be pumped up to 2000m² per day
- Contains special fibres to give excellent crack resistance
- Protein free / Portland cement free
- Suitable for laying over existing floor finishes such as tiles or flooring grade mastic asphalt
- Colour grey

Supplied in units of 25kg.

Coverage 1.7kg/mm/m².

■ Tremco SX200 Self-levelling Green Smoothing Compound

SX200 is a fast drying, self levelling, pump applied underlayment, for levelling of concrete floors before the installation of floor coverings.

SX200 provides good resistance to impact, point loading and abrasion. Ideally suited to floors in office buildings, shops, public buildings, schools, hospitals, airports and prisons.

- Environmentally friendly product: OPC free and 38% recycled content
- Up to 30% reduction in environmental impact and global warming potential compared to traditional cementitious screeds
- Fast setting - walk on after 2 - 4 hours under suitable conditions
- Rapid installation - 2000m² per day for 7mm thickness, under suitable conditions
- Protein free - will not harbour bacteria
- Colour grey

Supplied in units of 25kg.

Applied thickness 3 - 30mm.

■ Tremco SX300 High Performance Latex Underlayment

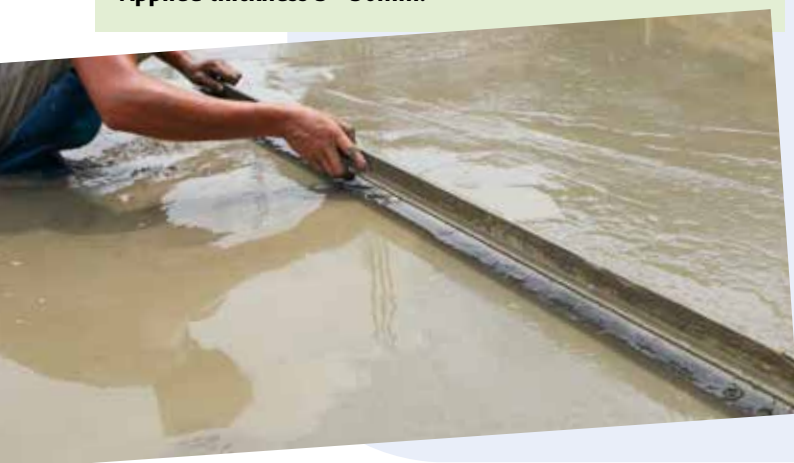
SX300 is a two part general purpose smoothing underlayment for interior applications.

SX300 is semi levelling and is specifically designed for the preparation and smoothing of interior subfloors prior to the application of a liquid applied damp proof membrane and receiving a floor covering.

- Short setting and cure time, facilitating fast track programs and minimising disruption
- Excellent adhesion to a wide range of common flooring substrates, including: concrete, sand/cement screeds, flooring grade asphalt, TREMCO surface DPM's, etc.
- Water resistant: can be used for pre-smoothing
- Protein free
- Self priming on most surfaces

Supplied in 22kg grey powder and 4.65kg white liquid (2 component kit).

Applied thickness 1 - 30mm.



call Kestral on 01744 830001

F 01744 830002 e sales@kestral.net w www.kestral.net

Our range of Urban Landscaping products are designed to provide durable and attractive surfacing solutions on commercial and domestic installations such as driveways,

footpaths, patios, access roads and swimming pool surrounds.

■ Ronacrete RonaDeck Resin Bonded Surfacing

RonaDeck Resin Bound Surfacing is a resin bound aggregate surface for pedestrian and vehicular traffic. RonaDeck Resin Bound surfaces are decorative and functional, seamless and slightly flexible.

The open matrix allows water to drain through to the base, eliminating water ponding and allowing water to drain to planted areas or land drains. The surfacing may be applied to SuDS compliant bases and sub-bases, reducing the impact of urban development on flood risk and allowing water to flow into water courses. Edgings created from brick, stone, timber or steel should be installed to retain and protect the resin bound surfacing.

RonaDeck Resin Bound Surfacing is a two component polyurethane resin which binds a range of selected decorative kiln-dried aggregates. Surfacing provides an attractive porous surface which is strong enough for foot and light vehicle traffic.

- Will not deteriorate or discolour when exposed to UV light
- High slip resistance
- SuDS compliant
- Highly permeable - up to 850 litres / m² / minute
- 38% of resin formulated from a botanic source
- Product warranty up to 15 years available
- Natural appearance
- Available in a wide range of colours

Supplied as:

Surfacing Resin 7.5kg. Surfacing Aggregate 107kg.

■ Ronacrete RonaDeck Resin Bonded Seal Coat UV

Resin Bonded Seal Coat UV is a clear polyurethane sealer suitable for internal and external use to seal, bind and protect RonaDeck Resin Bonded Surfacing surfaces. Used as a two coat seal.

- Improved aggregate retention and weathering resistance
- Increased abrasion resistance
- Surface is easier to clean
- Chemical resistant against a wide range of chemicals and solvents
- Simple to use
- Apply by brush or roller
- Supplied ready to use
- Moisture curing
- Non yellowing when exposed to UV light

Supplied as 5 litre and 22 litre units.

■ Ronacrete RonaDeck Rapid Cure Resin Bonded Surfacing

Rapid cure decorative slip resistant safety surfacing and landscaping.

RonaDeck Resin Bonded Surfacing is a resin bonded aggregate surfacing system for landscaping, paths, car parks, drives, ramps, highways etc. RonaDeck Resin Bonded Surfacing produces a surface with the appearance of natural aggregate or stone but with aggregate which is firmly bonded to the surface.

- Rapid cure resin can be trafficked after 4 hours
- High slip resistance
- DDA compliant
- Self priming on asphalt and concrete
- Highly decorative
- Suitable for pedestrian and vehicular traffic
- Available in a wide range of colours

System supplied as:

RonaDeck Resin Bonded GP Primer - 5 litres

RonaDeck Resin Bonded Steel Primer - 5 litres

RonaDeck Resin Bonded Surfacing Resin - 7.5kg

RonaDeck Resin Bonded Surfacing Aggregate - 25kg

RonaDeck Resin Bonded Seal Coat UV - 5 litres and 22 litres



call Kestral on 01744 830001

F 01744 830002 e sales@kestral.net w www.kestral.net



Urban Landscaping

■ Ronacrete RonaDeck Eco Tree Pit

RonaDeck Eco Tree Pit is a resin bound natural aggregate finish surround for planted trees in public and private areas. Surrounding the tree in a solid yet semi-flexible construction allows the tree to grow, prevents a build up of litter and removes a storage or hiding place for hazardous items such as syringes and needles. Dogs are also less likely to foul in such areas. Available in a variety of colours.

The RonaDeck Eco Tree Pit comprises a two component polyurethane resin and a range of selected rounded attractive aggregates. The design of this resin bound aggregate system provides a surface which is attractive, highly porous and able to receive light foot traffic.

- SuDS compliant - highly permeable
- UV stable - non yellowing resin
- Natural aggregate appearance
- Alternative to tree grilles
- recycled aggregates available
- Installed by approved contractors
- Design can accommodate some tree growth
- Attractive; complements the surrounding area
- Design accommodates tree growth
- Low maintenance
- Variety of colours

**Supplied as 25kg batch. Coverage @ 40mm 0.41m²
or supplied as 100kg batch. Coverage @ 40mm 1.66m²**

■ Ronacrete RonaDeck Resin Bonded Pore Filler

RonaDeck Resin Bonded Pore Filler is a fast cure cementitious pore filler for filling pores and voids in the matrix of surfaces prior to the application of RonaDeck Resin Bonded Surfacing. It is used prior to the application of RonaDeck Resin Bonded Surfacing to fill holes and voids in the surface and considerably reduce the amount of RonaDeck Resin Bonded Surfacing Resin used on open texture surfaces.

RonaDeck Resin Bonded Pore Filler has excellent adhesion to bituminous and cementitious surfaces. The speed of RonaDeck Resin Bonded Pore Filler enables it to be overlaid within 1 – 2 hours at 10°C to 20°C. It is supplied as a two component product, powder and liquid. Surfaces on which RonaDeck Resin Bonded Pore Filler is applied must be well constructed, structurally stable with good cohesive strength and suitable to receive a bonded high strength surfacing. Weakness in or on the surface is likely to result in failure.

- Scrape on/scrape off pore filler
- Use prior to application of RonaDeck Resin Bonded Surfacing
- Reduces amount of resin needed on open face surfaces
- Quick curing
- Allows overlay within 1-2 hours
- Easy to use

**Pack size 25kg; supplied as powder and liquid.
Coverage 1kg - 2.5kg per m²**

■ Ronacrete RonaDeck Resin Bonded Scratch Coat

RonaDeck Resin Bonded Scratch Coat is a polyurethane scratch coat for filling defects, unevenness and holes in the matrix of surfaces prior to the application of RonaDeck Resin Bonded Surfacing.

RonaDeck Resin Bonded Scratch Coat has excellent adhesion to bituminous, cementitious, timber and metal surfaces. The speed of RonaDeck Resin Bonded Scratch Coat enables it to be overlaid within 1 - 2 hours at 10°C to 20°C. It is supplied as a two component product.

Surfaces on which RonaDeck Resin Bonded Scratch Coat is applied must be well constructed, structurally stable with good cohesive strength and suitable to receive a bonded high strength surfacing. Weakness in or on the surface is likely to result in failure.

- Scrape on/scrape off pore filler
- Use prior to application of RonaDeck Resin Bonded Surfacing
- Reduces amount of resin needed on open face surfaces
- Quick curing
- Allows overlay within 1-2 hours
- Easy to use

**Pack size 20kg; supplied as powder and liquid.
Coverage 2kg - 4kg per m²**

■ Ronacrete RonaDeck EcoPath UV

RonaDeck EcoPath UV is a resin bound aggregate surface for pedestrian traffic as an alternative to conventional paving. RonaDeck EcoPath UV surfaces are decorative and functional, seamless and slightly flexible.

RonaDeck EcoPath UV comprises RonaDeck EcoPath UV Resin, a two component UV stable polyurethane resin which binds aggregate and recycled vulcanised rubber granules. RonaDeck EcoPath UV provides an attractive surface, is strong enough for foot traffic, and is highly porous. RonaDeck EcoPath UV is typically applied to compacted Type 3 aggregate to provide a thin alternative to asphalt or concrete. RonaDeck EcoPath UV is designed for light foot traffic only. It is not designed for road surfacing, drives or car parks.

- SuDS compliant - highly permeable paving
- UV stable resin will not discolour
- Natural aggregates
- Uses rubber granules recycled from truck tyres
- Alternative to conventional paving
- Flexible
- Installed by approved contractors
- Low maintenance

Packed as a as a 104kg batch. Coverage @ 35mm 2.4m²



call Kestral on 01744 830001

F 01744 830002 e sales@kestral.net w www.kestral.net

■ Larsen Streetscape PS

Larsen Streetscape PS is a polymer modified cement based slurry specifically designed to meet the recommended performance characteristics of BS7533 parts 4, 7 & 12.

It is manufactured from a controlled blend of specially selected aggregates, cements, and synthetic polymers and only requires the addition of water to produce a high quality priming slurry for use to improve bond strengths of natural stone setts and cobbles, flags, concrete and clay pavers to Larsen Streetscape FBC.

- Easy to use
- Brush apply
- Colour grey
- BS7533 compliant

Supplied as 25kg bags.
25 kg will cover 19m².

■ Larsen Streetscape FJM

Larsen Streetscape FJM is a fast setting flowing jointing grout mortar specifically designed to meet the recommended performance characteristics of BS7533 parts 4, 7 & 12.

It is manufactured from a controlled blend of specially selected aggregates, cements and additives and only requires the addition of water to produce a high quality grouting mortar for rigid or bound construction methods. Streetscape FJM is ideal for the installation of natural stone setts and cobbles, flags, concrete and clay pavers.

- >40MPa compressive strength
- 5 - 50mm joint widths
- Up to 200mm joint depths
- Low shrinkage
- Frost resistant
- Colours grey, charcoal, buff and black
- BS7533 compliant

Supplied as 25kg bags or bulk site silo.
Yield 13.6L per 25kg.

■ Larsen Streetscape FBC

Larsen Streetscape FBC is a fine bedding concrete specifically designed to meet the recommended performance characteristics of BS7533 parts 4, 7 & 12.

It is manufactured from a controlled blend of specially selected aggregates, cements, fibres and additives and only requires the addition of water to produce a high quality bedding layer for rigid construction methods. Streetscape FBC is ideal for the installation of natural stone setts and cobbles, flags, concrete and clay pavers.

- >40MPa compressive strength
- 10 - 75mm bed depth in one pass
- Low shrinkage
- Frost resistant
- Vehicle traffic after 24 hours
- Colour grey
- BS7533 compliant

Supplied as 25kg bags or bulk site silo.
Yield 13.2L per 25kg.

■ Fosroc® XR Cobbleset

High flow, easy to mix, shrinkage compensated rapid setting grout. XR Cobbleset is supplied as a pre-mixed blend of cements, silica sands and additives, which only require mixing with clean water to produce a consistent mortar. It has excellent bond strength without the use of a primer and can be applied in thicknesses of 5mm to 100mm in one application.

XR Cobbleset is used for the rapid pointing of granite setts, pre-cast concrete stone pavements and slabs. XR Cobbleset is especially beneficial in heavily pedestrianised areas, where a rapid reopening to the public is required.

XR Cobbleset has been specifically formulated for grouting between granite setts with rapid return to service and is particularly useful when a fast reopening to pedestrians is required.

- Rapid strength gain – will accept foot traffic in 30 minutes
- Pre-mixed and bagged material which only requires the addition of clean water
- Shrinkage compensated formulation
- Excellent bond strength
- Easy to mix
- Manufactured under an approved BS EN ISO 9000 Quality System

Packed in 25kg bags.

Yield approximately 13.0 litres.



Accessories and Consumables

■ Arbo Cleaner 15

Arbo Cleaner No.15 is a Ketone based cleaner suitable for the effective cleaning and degreasing of many different construction products.

Recommended For – Glass, Anodized and Mill Finish Aluminum, Stainless Steel, Galvanized Steel, Copper, Ceramic and Vitrified Tiles, GRP, Untreated Timber. Concrete and Brick for the removal of old sealant residues.



■ Arbo Cleaner 17

Arbo Cleaner No.17 is a Xylene based cleaner suitable for the effective cleaning and degreasing of many different construction products.

Recommended For – Anodized and Mill Finish Aluminum, Stainless Steel, Galvanized Steel, Copper, Ceramic and Vitrified Tiles, GRP, Untreated Timber. Concrete and Brick for the removal of old sealant residues.

Cleaning of mixing and application equipment.



■ Biodex Wash

Biodex Wash is a powerful surface treatment for neutralising active mould, fungal and bacterial growth prior to the application of products in the Flexcrete range.

Biodex Wash is designed to kill active mould, fungal and bacterial spores and organisms such as moss, lichen and algae, prior to the application of primers, coatings and repair mortars in the Flexcrete range. Unlike many conventional systems, Biodex Wash remains active after its initial application, guarding against subsequent infection for up to two years. It is supplied in the form of a concentrate.



■ Gun and Foam Cleaner

Gun & Foam Cleaner is a ready to use cleaning aerosol can for use on Soudafoam Gun and Soudal foams.

Characteristics

- Used in conjunction with Soudafoam Gun and the foam applicator as cleaning fluid
- Contains solvents
- Can be used with normal cans due to the attachable spray nozzle

Applications

- Cleaning of the gun
- Cleaning of the valves of the PU Foam Aerosol
- Removal of uncured foam

Packed Size: Carton 12 x 500ml



■ Skeleton Gun

Single component manual applicator for cartridges. Strong metal frame with tough epoxy coated paint finish for a long tool life.



■ Cartridge Gun

Single component applicator for cartridges. Powerful 12:1 trigger for easy dispensing. Very good build quality – designed with the professional in mind for a high service life.



call Kestral on 01744 830001

F 01744 830002 e sales@kestral.net w www.kestral.net

Accessories and Consumables

■ Bulk Gun

For medium to high viscosity material. The Powerflow Bulk is a large capacity, speciality applicator for low viscosity (pouring grade) bulk materials. It can also be used for the application of sachet packed sealants.



■ Combi Gun

Single component applicator for cartridges and sachets. Powerful 12:1 trigger for easy dispensing. Very good build quality – designed with the professional in mind for a high service life.



■ Ball Joint Nozzle

Ball-jointed, flexible nozzle adapter for use with all 310ml cartridges. Simple angled sealant gunning precision to allow use in tight spots.



■ White and Yellow Nozzles

Spare nozzles for Powerflow Guns.



■ Tooling Sticks

Wave shaped tooling sticks for smoothing mastics and sealants. Curved handle to fit your hand and further shaped to fit various joint applications.



■ Pigtail Mixer

Fits standard sized drill chucks to mix most 2 – part materials thoroughly and correctly, especially polysulphide based mastic sealants etc.



■ Follower Plate

To be used specifically to vacuum suck material from 2.5 litre tins into empty cartridges or barrel guns etc. 153mm width to be used with 2.5 litre tins such as Thioflex 600 (GunGrade) with a purpose built bolt and thread handle.



■ Thioflex Mixer Paddle

Purpose made tool for the thorough mixing of Thioflex 600 polysulphide sealant. Simply insert into a slow speed drill and mix the two parts together directly in the tin.



- Heavy duty, robust, heavy gauge steel
- Fits most standard drill chucks
- Perfect for mixing 2-part sealants together in the tin

■ Wonder Wipes

Everbuild wonder wipes are specially formulated for the building and allied trades to clean wet and semi-cured paints, sealants, adhesives, bitumen's, polyurethanes, expanding foams, polyester fillers and epoxies from hands, tools and surfaces. Wonderwipes contain a powerful antibacterial additive which has been tested by an independent laboratory to BSEN 1276:2009 and PREN 12054:1995 – the standards for killing bacteria on dirty surfaces and hands. Wonderwipes are resistant to MRSA, salmonella, Listeria and E.Coli but also easily remove oil, grease petrol and inks, yet the powerful cleaning agents are still kind to hands. Wonder wipes are available in containers containing 100 or 300 wipes.



Passive Fire Protection

Kestral's Passive Fire Protection products are designed to contain the outbreak of a fire and slow down the spread in buildings, sealing openings by means of compartmentation. This provides a barrier and retards the

passage of flames across a surface by resisting the penetration of fire into main structures such as doors. Provides a barrier to hot gas and flame.

■ ASF FR Mineral Wool Board



ASF FR Mineral Wool Boards have been designed to maintain the fire resistance of separating walls and floors where they are breached by single or multiple building services.

The board consists of a rigid mineral wool core, over-coated with an ablative fire retardant coating on 1 or 2 sides. The top coat provides an important barrier to the passage of hot gases through the thickness of the board.

Selection of the board coated 1 or 2 sides is determined by installation considerations and fire resistance requirements.

- 4 hour rating
- Simple low cost installation
- Approved for pipes, cable bunches and ducting
- Tested in accordance with: EN1363-1:1999 & EN1366-3:2004 and BS476-Part 20:1987

A full approval of the product is contained in Certifire Certificate of Approval No. CF 834.

FR Board Sizes

1200mm x 600mm x 60mm.

Coated both sides or on one side.

1200mm x 600mm x 50mm.

Coated both sides or on one side.

Board Thickness and Coating	Sleeve Colour	Boards per Pallet
50mm - coated both sides	Clear	80
50mm - coated one side	Blue	80
60mm - coated both sides	Black	72
60mm - coated one side	Green	72

■ ASF Pipe Collars



ASF Pipe Collars consist of a two part coated circular steel shell that fits around plastic pipes (PVC, PP, PE, ABS); plastic pipe bundles – with or without cables; and bundles of cables.

The collars have a secure and simple locking device. The steel shell contains a graphite based material that reacts to heat, expanding in the event of a fire to fill the opening left by the melting plastic of the through penetration.

It can be fitted on the outside of a wall or floor, or in combination with ASF FR Board or ASF Mortar.

- 4 hour rating
- Simple low cost installation
- Approved for pipes, cable bunches and ducting
- Tested in accordance with: EN1363-1:1999 & EN1366-3:2004 and BS476-Part 20:1987

A full approval of the product is contained in Certifire Certificate of Approval No. CF 832.

Collar Size	Box Quantity
55mm	24
82mm	24
110mm	24
125mm	20
160mm	12
200mm	1
250mm	1
315mm	1



call Kestral on 01744 830001

F 01744 830002 e sales@kestral.net w www.kestral.net

Passive Fire Protection

■ Pipe Wraps



ASF Pipe Wrap contains a graphite material, within a flexible plastic sleeve that reacts to heat; expanding to fill the void created by the melting plastic through-penetration.

ASF Pipe Wraps can be used with plastic pipes (PVC, PP, PE, ABS), bundles of plastic pipes – with or without cables, and cable bundles.

Fitted by wrapping it around the through-penetration and securing with the adhesive tape, then cast into the wall or floor construction.

ASF Pipe Wrap can also be fitted in ASF FR Board.

- 4 hour rating
- Simple low cost installation
- Approved for pipes, cable bunches and ducting
- Tested in accordance with: EN1363-1:1999 & EN1366-3:2004 and BS476-Part 20:1987

A full approval of the product is contained in Certifire Certificate of Approval No. CF 833.

Wrap Size	Pack Quantity
55mm	25
82mm	25
110mm	25
110mm (3 hour)	25
125mm	20
160mm (3 hour)	25
250mm	1
315mm	1

■ ASF Socket Box Protection Pad



ASF Socket Box Protection Pads are an easy to apply fire and sound rated sealant supplied as a non-setting putty. The pad is hand workable, re-useable and re-serviceable due to its non-setting properties.

ASF Socket Box Protection Pads will prevent the passage of smoke, flames, sound and air movement through the electrical socket. Shaped for use on both single and double electrical sockets installations in dry lining walls. The pads are supplied in a cross shape for internal installation in a box and in a rectangular shape for application on the rear of the box.

ASF Pipe Wrap can also be fitted in ASF FR Board.

- 2 hour fire rating
- Excellent acoustic properties
- Can be easily installed on first or second fix
- Fire tested to: BS EN 1364-1:1999 and BS EN 1366-3:2004
- Sound Insulation tested to: BS EN ISO 140-3:1995

A full approval of the product is contained in Certifire Certificate of Approval No. CF 831

Double/Single Internal Cross Shape: 230mm x 170mm approx. overall dimensions. Cutting guides are imprinted on the pad to allow for easy cutting of the pad to fit single boxes.

Internal Cross Shape: Double Box: 230mm x 170mm approx. Single Box: 170mm x 170mm approx.

External Rectangular Shape: Double Box: 230mm x 230mm Single Box: 180mm x 130mm.

■ ASF S291 Intumescent Pressure Sealant

SF S291 Intumescent Pressure Sealant is an easy to apply waterborne permanently flexible acrylic emulsion sealant containing graphite which expands at temperatures above 135° C sealing around various penetrations and services to prevent the passage of smoke and flames.

ASF S291 Intumescent Pressure Sealant has been designed to expand in fire conditions to seal gaps & holes formed when services and substrates melt/fall away and maintaining the integrity of the fire barrier.

ASF S291 Intumescent Pressure Sealant is an engineered sealant ensuring performance during service life with excellent adhesion and crack resistance when applied as recommended.

ASF S291 Intumescent Pressure Sealant is suitable for both internal and external applications.

- 4 hour rating
- Closes & seals plastic pipes
- Tested in accordance with: BSEN 1366-3:2009
- A full approval of the product is contained in Certifire Certificate of Approval No. CF 830

A full approval of the product is contained in Certifire Certificate of Approval No. CF 830.

ASF S291 Intumescent Pressure Sealant is available in 310ml rigid plastic cartridges.



call Kestral on 01744 830001

F 01744 830002 e sales@kestral.net w www.kestral.net



Passive Fire Protection

■ ASF S290 Acoustic Intumescent Sealant

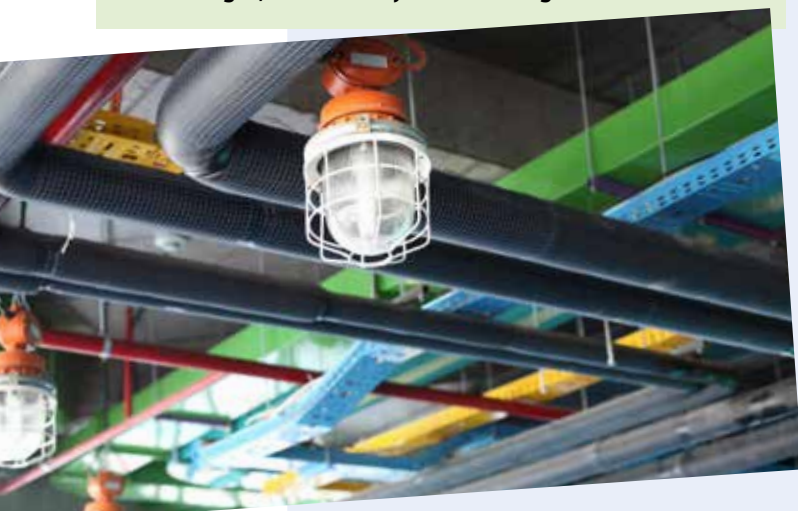
ASF S290 Acoustic Intumescent Sealant is a one part fire stopping gun grade joint sealant. Emulsion acrylic based it gives a firm yet flexible seal to joints in a variety of fire rated structures. It will not support combustion and when subjected to heat, chars and intumesces preventing the spread of smoke and fire through the joint.

ASF S290 Acoustic Intumescent Sealant is designed for sealing joints, voids and irregular holes in fire walls, floors, partitions and other structures and for maintaining their integrity when sealing around pipes and cables that penetrate them. It is also ideally suited for internal perimeter pointing of fire rated door and window frames.

- 4 hour rating
- Versatile one product solution
- Tested in accordance with: BS476-Part 20:1987 - fire rating, BSEN 1366-3 - fire rating and BSEN ISO 717-1:1997 - acoustic rating

A full approval of the product is contained in Certifire Certificate of Approval No. CF 829

ASF S290 Acoustic Intumescent Sealant is available in 310ml & 380ml rigid plastic cartridges, 600ml aluminium foil sausages, and 830ml jumbo cartridges.



■ Fosroc® Flamex Fire Protection

Flamex One and Flamex Two intumescent sealants.

Under fire conditions Flamex One and Flamex Two intumesce, forming a foam-like structure which insulates and provides a barrier to hot gas and flame.

Flamex One emulsion based sealant sets quickly and gives excellent adhesion to most building materials. It has a 10% movement accommodation factor for low movement joint sealing and gap filling applications such as fire door frames. Flamex One is also suitable for sealing around fire protection boards. It can be used in joints from 5 to 20mm. The minimum depth of seal should be 15mm. Acts as an acoustic sealant.

Flamex Two high performance sealant forms a tough, flexible rubber-like seal with a movement accommodation factor of 25% for high movement situations. Flamex Two is suitable for expansion joints in building superstructures and may be used in both internal and external joints. Flamex Two can be used in joints from 5mm upto 50mm wide. The width of sealant should ideally be twice the depth, with a minimum depth of 12mm. In trafficked joints, sealant depth should be a minimum of 20mm. The use of a surface primer is always required.

- Extensively fire tested in accordance with BS 476 Pt:20: 1987
- Fire tested in overhead joints as well as in wall joints
- Over 4 and 5 hours insulation and longer integrity rating, depending on joint design
- Suitable for fire stopping of joints as defined by Approved Document B of the Building Regulations
- Prevents the passage of smoke through joints under fire conditions
- Effective as normal building sealants and allows structural movement
- Flamex Two is resistant to a range of chemicals

Flamex One is supplied in 380ml cartridges packed in cartons of 20.

Flamex Two is supplied in 2.5 litre tins in cartons of 4.



call Kestral on 01744 830001

F 01744 830002 e sales@kestral.net w www.kestral.net

Formwork Treatments and Concreting Products

Kestral Frostmat	2
Flexcrete TIEFILL	2
Fosroc® Concure WB	2
Flexcrete Curing Membrane WB	3
Adomast Adolease	3
Adomast Adocure WW	3
Adomast Adowax	3
Adomast Safelease	4
Adomast Adostrike	4
Adomast Safetard Gel	4
Adomast Safetard Liquid	4
Adomast Adocure Sealer	5
Adomast Adocure Sealer PF	5
Adomast Adocure Super	5
Adomast Safecure Super	5

Concrete Repairs

Kespatch EM41	6
RonaStreet Kerb Repair	6
Flexcrete BONDING BRIDGE 842	6
Fosroc® XR 45	6
Fosroc® XR 90	6
Fosroc® Nitoprime Zincrich Plus	7
Fosroc® Nitomortar S	7
Fosroc® Nitomortar PE	7
Fosroc® Paveroc	7
Fosroc® Patchroc GP	8
Fosroc® Renderoc GP	8
Fosroc® Renderoc FC	8
Fosroc® Renderoc HB	8
Fosroc® Renderoc HB30	9
Fosroc® Renderoc HB45	9
Fosroc® Renderoc ST 05	9
Fosroc® Renderoc LA55	10
Fosroc® Renderoc RP252	10
Fosroc® Nitofill LV and Nitofill TH	10
Fosroc® Concure WB	10
Fosroc® Renderoc HBS	11
Flexcrete FASTFILL	11
Flexcrete MONOLEVEL RM	11
Flexcrete MONOLEVEL 844SP	11
Flexcrete MONOLEVEL FC	11
Flexcrete MARINE MORTAR S	12
Flexcrete MONOLITE	12
Flexcrete MONOMIX	12
Flexcrete MONOMIX HD	12
Flexcrete MONOMIX WS	12
Flexcrete MONORUB	12
Flexcrete MONOLEVEL 250F	13
Flexcrete UNIMATCH	13
Flexcrete CURING MEMBRANE WB	13
Flexcrete STEEL REINFORCEMENT PROTECTOR 841	13

Protective Coatings

Fosroc® Dekguard S	14
Fosroc® Dekguard W	14
Fosroc® Galvafroid	14
Fosroc® Dekguard CP	15
Fosroc® Dekguard Elastic	15
Flexcrete Monodex Ultra	15
Flexcrete Bond Prime	16
Flexcrete Monodex Smooth	16
Flexcrete Monosil	16

Grouts and Anchoring

Fosroc® Conbextra EP	17
Fosroc® Conbextra PM	17
Fosroc® Conbextra BB92	17
Fosroc® Conbextra TS	18
Fosroc® Conbextra GP	18
Fosroc® Conbextra BB	18
Fosroc® Conbextra UW	18
Fosroc® Conbextra HF	19
Fosroc® Cebex 100	19
KCP Construction Grout	19

Joint Fillers and Sealants

Kesflex Polyurethane Expansion Joint	20
Adshead Radcliffe Arbothane 1245	20
Bitumen Impregnated Fibre Board	20
DOW CORNING® 895	20
Joint Backer Rod	20
Miothene	21
Adshead Radcliffe Arbokol Secure	21
Adshead Radcliffe Arbokol 1025 SP	21
Geocel LM Silicone	21
Geocel HM Silicone	21
Geocel 201	22
Geocel 925 NS	22
Geocel 945	22
Fosroc® Colpor 200PF	22
Fosroc® Thioflex 600	23
Fosroc® Nitoseal MS600	23
Fosroc® Hydrocell XL	23
Fosroc® Expandafoam	23
Fosroc® Nitoseal MS60	23
Fosroc® Flamex Fire Protection	24
Fosroc® Nitoseal PU800	24
Fosroc® Nitoseal MS300	24
Fosroc® Nitoseal MS100	24



Waterproofing and Damp Proofing

Kesflex Polyurethane Expansion Joint	20
Kestral CELLA-COTE	25
Flexcrete FASTFILL WP	25
Ronacrete Monoplug Rapid Water Stop	25
Tremco illbruck Balcony Systems	25
Tremco ES300	25
Flexcrete CEMPROTEC ELASTIC	26
Flexcrete CEMPROTEC Clutch Fillers	26
Flexcrete CEMPROTEC E942	26
Flexcrete CEMENTITIOUS COATING 851	26
Fosroc® Mulseal DP	27
Fosroc® Proofex Cavitydrain	27
Fosroc® Proofex 3000	27
Fosroc® Proofex 3000MR	27
Fosroc® Proofex Engage	28
Fosroc® Renderoc Plug	28
Fosroc® Proofex LM	28
Fosroc® Supercast SW	28
Fosroc® Supercast SWX	29
Fosroc® Supercast Synkoflex FR	29
Fosroc® Supercast PVC waterstops range	29
Visqueen Zedex CPT DP	30
Visqueen Zedex CPT High Performance DPC	30
Visqueen Waterproof Tanking	
Self-Adhesive Membrane	30
Visqueen DPC Jointing Tape	30
Visqueen TorchOn Tanking Membrane	31
Visqueen Pre-formed Units (Top Hats/Cloaks)	31
Visqueen Tapes	31

Flooring

Kesfloor DPM 1	32
Kesfloor DPM 2	32
Kesfloor ECLMP	32
Kesfloor PC120	32
Kesfloor EPP - Epoxy Penetrating Primer	32
Kesfloor HB Epoxy	33
Kesfloor WB Sealer	33
Kestral Anti-Slip Stair Tread Covers	33
Kestral Anti-Slip Stair Nosings	33
Kestral Anti-Slip Flat Sheets	33
DCP Antislip PUW	33
DCP Setseal 6	34
DCP Stopdust	34
MAPEI Latexplan Trade	34
MAPEI Ultraplan Renovation Screed	34
RonaScreed Mortar and Concrete	34
Flexcrete CEMPROTEC E-FLOOR	34
Flexcrete CEMPROTEC E-FLOOR HB	34
Flexcrete CEMPROTEC EF Primer	35
Flexcrete CEMPROTEC SANDSEAL 75	35
Flexcrete CEMPROTEC Levelling Coat	35
Fosroc® Nitoflor FC130	35
Fosroc® Nitoflor Lithurin	35
Fosroc® Nitoflor FC150	36
Fosroc® Nitoflor Hardtop S	36

Fosroc® Patchroc GP	36
Fosroc® Paveroc	36
Tremco CS150 Acrylic Primer	37
Tremco CS900 High Build Epoxy Coating	37
Tremco CS930 Epoxy Dustproofers	37
Tremco CS350 Self Smoothing Epoxy Screed	37
Tremco CS375 Industrial Wearing Screed	37
Tremco ES100 One Coat Universal DPM	38
Tremco SX100 Fibre Reinforced Smoothing Compound	38
Tremco SX200 Self-levelling Green Smoothing Compound	38
Tremco SX300 High Performance Latex Underlayment	38

Urban Landscaping

Ronacrete RonaDeck Resin Bonded Surfacing	39
Ronacrete RonaDeck Rapid Cure Resin Bonded Surfacing	39
Ronacrete RonaDeck Resin Bonded Seal Coat UV	39
Ronacrete RonaDeck Eco Tree Pit	40
Ronacrete RonaDeck Resin Bonded Scratch Coat	40
Ronacrete RonaDeck Resin Bonded Pore Filler	40
Ronacrete RonaDeck EcoPath UV	40
Larsen Streetscape PS	41
Larsen Streetscape FJM	41
Larsen Streetscape FBC	41
Fosroc® XR Cobbleset	41

Accessories and Consumables

Arbo Cleaner 15	42
Arbo Cleaner 17	42
Biodex Wash	42
Gun and Foam Cleaner	42
Skeleton Gun	42
Cartridge Gun	42
Bulk Gun	43
Combi Gun	43
Ball Joint Nozzle	43
White and Yellow Nozzles	43
Tooling Sticks	43
Pigtail Mixer	43
Follower Plate	43
Thioflex Mixer Paddle	43
Wonder Wipes	43

Passive Fire Protection

ASF FR Mineral Wool Board	44
ASF Pipe Collars	44
Pipe Wraps	45
ASF Socket Box Protection Pad	45
ASF S291 Intumescent Pressure Sealant	45
ASF S290 Acoustic Intumescent Sealant	46
Fosroc® Flamex Fire Protection	46



call Kestral on 01744 830001

F 01744 830002 e sales@kestral.net w www.kestral.net

Kestral
Construction Products Ltd



**Simply call us on 01744 830001 to
discuss your requirements**

**This is only a small range of our
products if you don't see it, call us.**

Kestral Construction Products can supply a whole range of products at
very competitive prices from the following manufacturers:

Adbruf	Fosroc	Ronacrete
Adomast	Geocel	Sealocrete
Adshead Ratcliffe	Grace	SCP
Ardex	IKO	Sika
Cetco	Instarmac	Soudal
CMS Pozament	Larsen	TAM International
Colas	Liquid Plastics	Tor Coatings
Compriband	Parex	Tremco
DCP	Rawell	Uzin
Dow Corning	Remmers	Vandex
Everbuild	Resin Building Products	Visqueen
Fischer	RIW	Watco
Flexcrete		Weber
		Winn & Coales (Denso)

- Formwork Treatments and Concreting Products
- Concrete Repairs
- Protective Coatings
- Grouts and Anchoring
- Joint Fillers and Sealants
- Waterproofing and Damp Proofing
- Flooring
- Urban Landscaping
- Accessories and Consumables
- Passive Fire Protection



Kestral Construction Products Ltd

Unit 2, Central Trading Estate, Bewsey Road,
Warrington, Cheshire WA2 7LP

t 01744 830001

f 01744 830002

e sales@kestral.net

www.kestral.net